

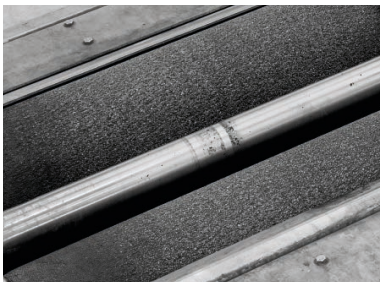
# TRUCK



**SAFELANE TRUCK**

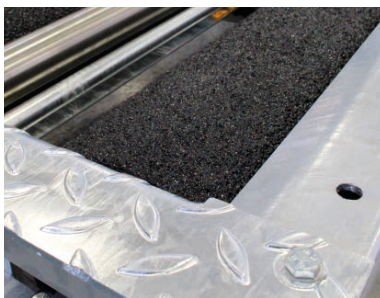
# ROLLER SETS

*All models available in 1-speed or 2-speed, 2WD or 4WD configuration.  
With elevated or level rollers.*



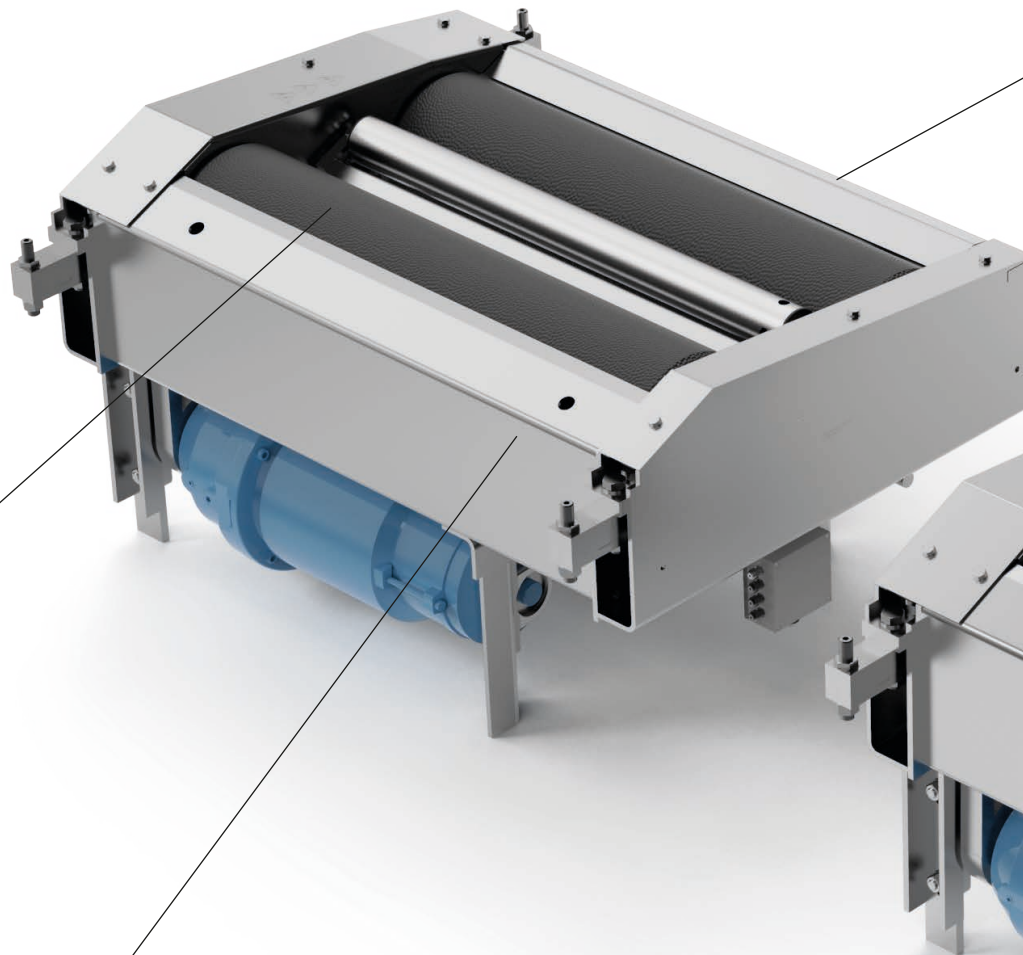
## Rollers

- 1000, 1200 or 1300 mm length
- Corundum coated
- Steel, exclusive SmoothGrip design for spiked tyres
- Drive off the rollers through electro brake or automatic aid
- Rust-proof feeler rollers



## Frame

- Frame completely hot dip galvanized, not just the covers



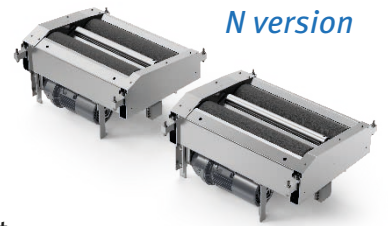
## Motor

- Splash proof motors
- All motors can be with brakes

## PRODUCT RANGE

### 13 ton 413-BR

- For passenger cars/vans or trucks and trailers in unloaded condition
- Low to normal throughput

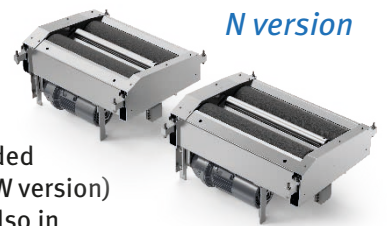


#### Load cells

- Wear-free strain-gauge type load cells

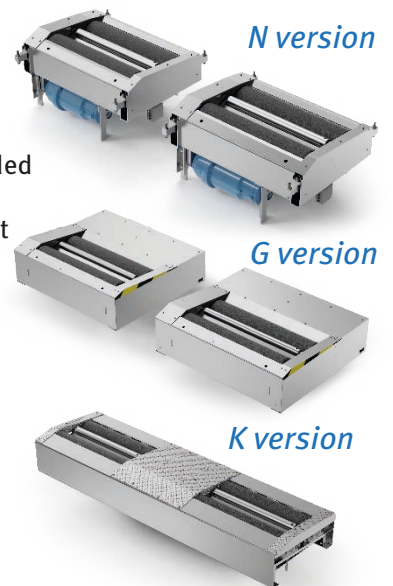
### 15 ton 415-BR

- For empty or partially loaded vehicles and busses (11 kW version)
- For vehicles and busses also in loaded conditions (15 kW version)
- Low to normal throughput



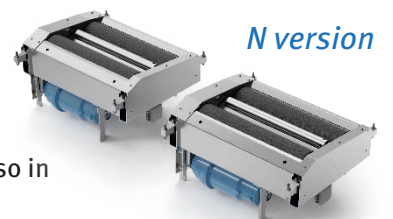
### 16 ton 416-BR

- For empty or partially loaded vehicles and busses
- Normal to high throughput



### 20 ton 420-BR

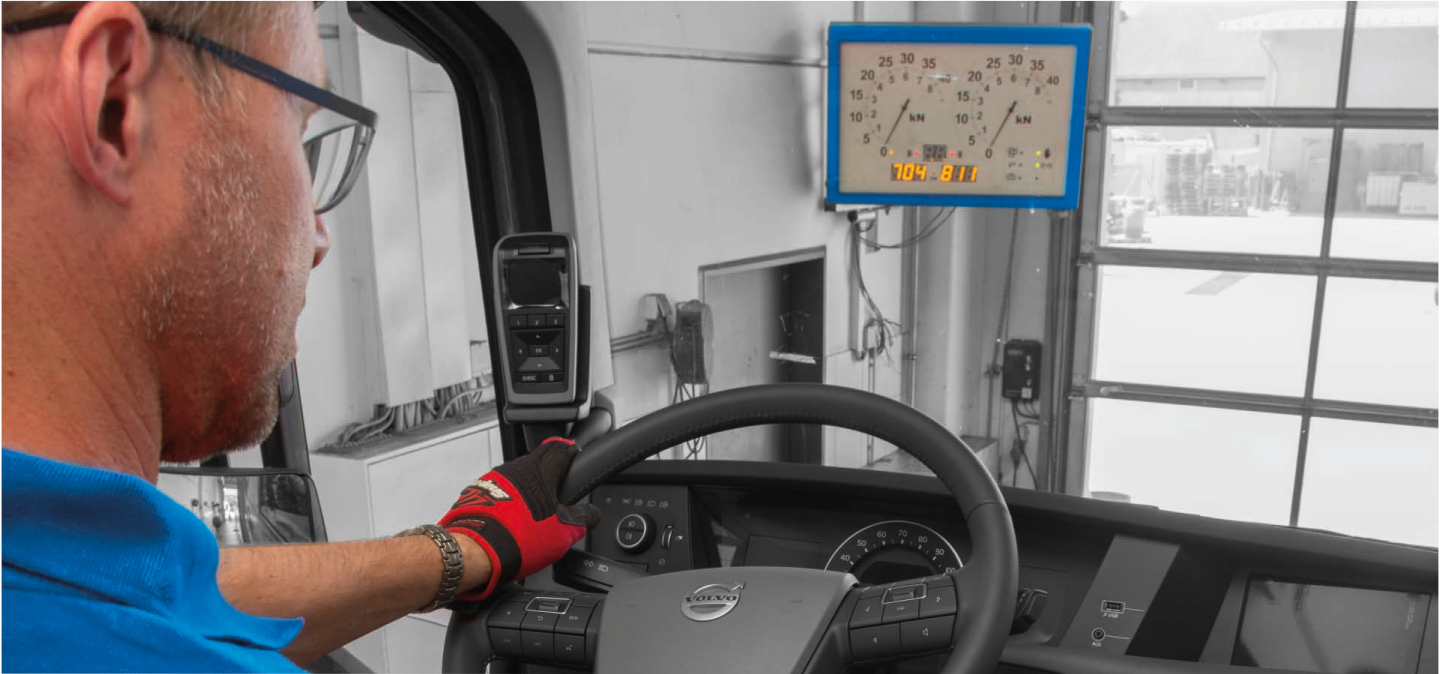
- For all kind of vehicles, also in loaded condition
- Normal to high throughput



Possibility of installation of the roller set in existing pits.

## FLEXIBLE CONFIGURATIONS

Choose your solution



## BASIC PACKAGE

### Control unit



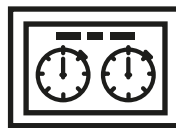
DONGLE

Different functionalities are opened via dongles, a revolutionary concept that guarantees the customer's investment for the future

- 2 speeds
- 1 speed + counter rotation (4WD)
- 2 speeds + counter rotation (4WD)
- 1 speed + PC connection
- 2 speeds + PC connection
- 1 speed + counter rotation (4WD) + PC connection
- 2 speeds + counter rotation (4WD) + PC connection

## DISPLAY MODULES

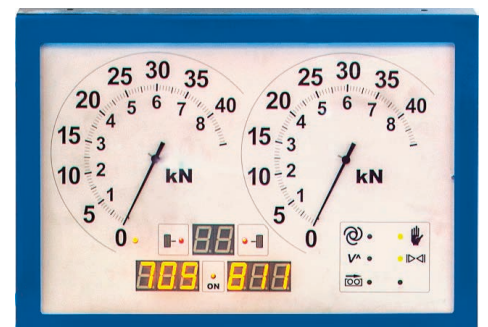
Multiple displays are necessary in installations with dual-direction testing and to test long vehicles and/or truck/trailer combinations



### ANALOGUE

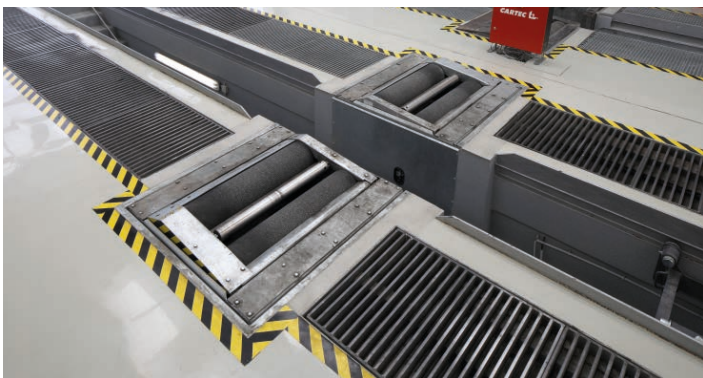
PLACE UP TO 3 ANALOGUE DISPLAYS IN YOUR WORKSHOP

### Analogue display





**Roller set**



**Radio remote control**



**DIGITAL**

PLACE UP TO 2 MONITORS AND/OR TABLET BEYOND THE WORKSTATION IN YOUR WORKSHOP

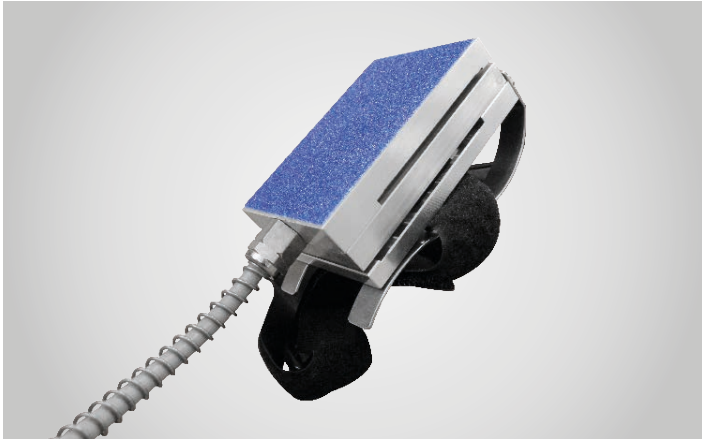
**Workstation**



**Tablet**



## OPTIONALS



**Pedal Pressure**  
transducers, cable-type or radio-controlled



**Pneumatic Pressure**  
transducers, cable-type or radio-controlled

## LOAD SIMULATOR

### Pulling System

#### NSV 3000

- NSV 3000 pneumatic pulling system - can be used with all models



#### NSV 4000

- NSV 4000 hydraulic pulling system - can be used only in combination with 20t version



### Lifting System

#### HBV 3000

- HBV 3000 hydraulic lifting system to be used in combination with 16t (N) and 20t versions, 1000 mm roller length
- The scope of the HBV 3000 is to achieve the minimum of 30% of the design brake actuator, prescribed by the ISO 21069 as requirement for the reliability of the calculated braking force

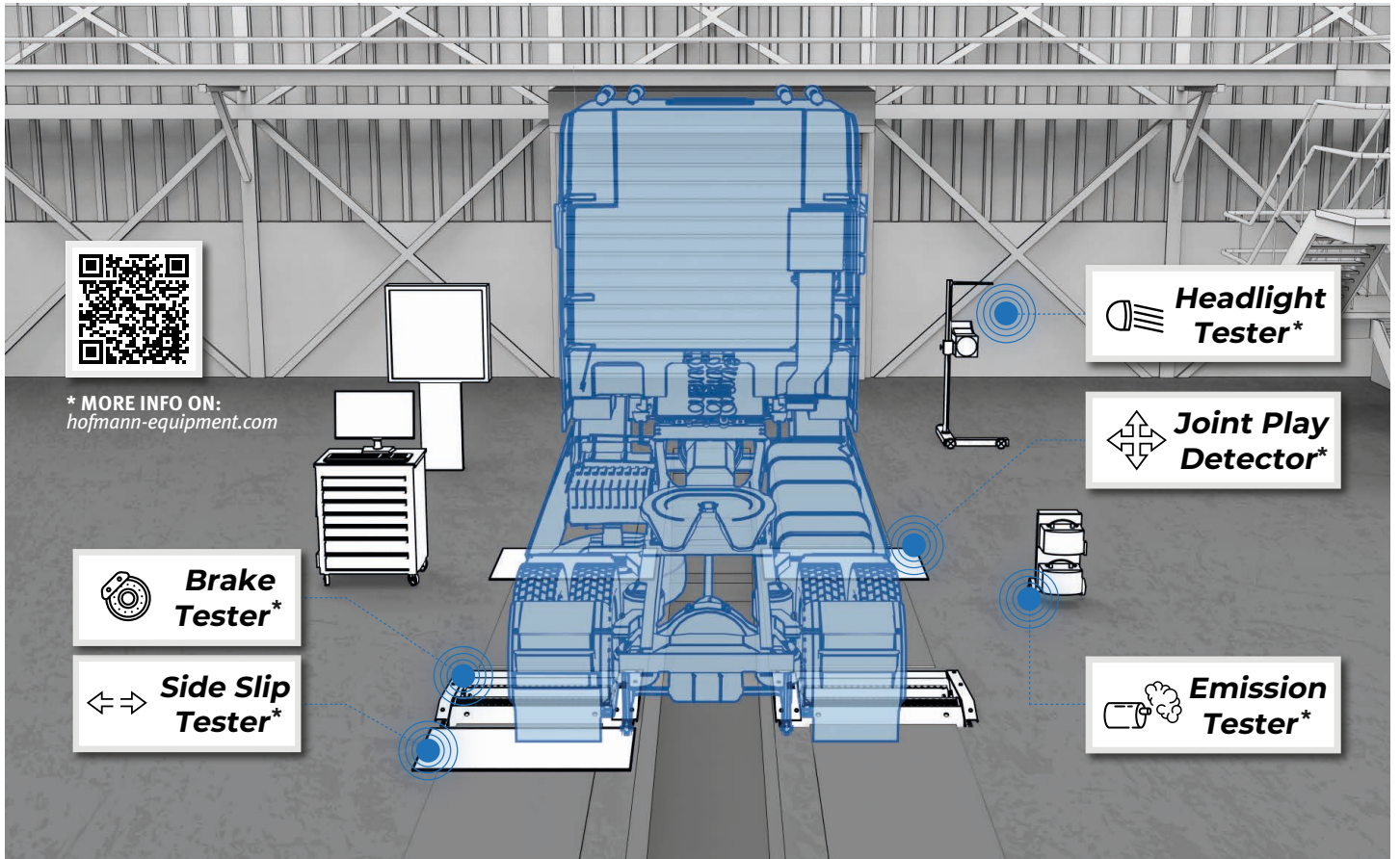


#### HBV 4000

- HBV 4000 hydraulic lifting system - can be used only in combination with 20t version - 1000 mm roller length



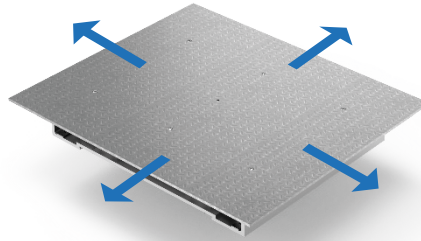
# TESTING SOLUTION PROVIDER



## JOINT PLAY DETECTOR

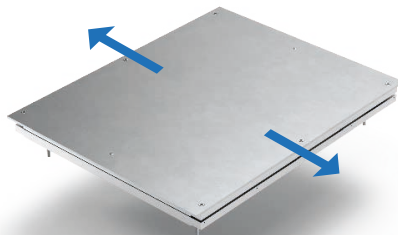
### Operation with wireless test lamp

- Focused and bright LED light sources
- Robust, shock- and break-proof housing



## SIDE-SLIP TESTER

- Measures the dynamic toe of the vehicle
- Drive through measurement
- Plate length of 1000 mm





## TECHNICAL SPECIFICATIONS



		413-BR	415-BR	415-BR	416-BR	416-BR	416-BR	420-BR
Type of construction		N	N	N	N	G	K	N
Temperature range (without additional heating system)	°C	from 0 to +40	from 0 to +40	from 0 to +40	from 0 to +40	from 0 to +40	from 0 to +40	from 0 to +40
Power supply	V	3/N/PE 400 V AC	3/N/PE 400 V AC	3/N/PE 400 V AC	3/N/PE 400 V AC	3/N/PE 400 V AC	3/N/PE 400 V AC	3/N/PE 400 V AC
Frequency	Hz	50	50	50	50	50	50	50
Fuse rating - slow blow type	A	3 x 50	3 x 50	3 x 80	3 x 50	3 x 50	3 x 50	3 x 80
Drive-over axle load / axle	t	13	15	15	16	16	16	20
Test weight / axle (70% efficiency - ISO 21069)	t	7,5	8,6	11,4	8,6	8,6	8,6	11,4
Roller coefficient dry/wet		>0,7 / >0,5	>0,7 / >0,5	>0,7 / >0,5	>0,7 / >0,5	>0,7 / >0,5	>0,7 / >0,5	>0,7 / >0,5
Maximum brake force	kN	26	30	40	30	30	30	40
Motor power	kW	2 x 9,2	2 x 11	2 x 15	2 x 11	2 x 11	2 x 11	2 x 15
Test width min. - max.	mm	variable	variable	variable	variable	variable	952-2922	variable
Roller diameter	mm	205	205	205	255	255	204	255
Roller length	mm	1000	1000	1000	1000 (1300 opt)	1200	985	1000 (1300 opt)
Roller elevation	mm	30	30	30	50	50	30	50
Roller distance	mm	400	400	400	450	450	400	450
Idling speed	km/h	2,5 (2,5-5,0 opt)	2,5 (2,5-5,0 opt)	2,5 (2,5-5,0 opt)	2,6 (2,6-5,2 opt)	2,6 (2,6-5,2 opt)	2,6 (2,6-5,2 opt)	2,6 (2,6-5,2 opt)
Dimensions of the roller set (each)	mm	1240 x 700 x 610	1240 x 700 x 610	1240 x 700 x 610	1261 x 1093 x 718	1560 x 1380 x 480	3160 x 920 x 428	1261 x 1093 x 718
Dimensions of the control unit	mm	900 x 900 x 200	900 x 900 x 200	900 x 900 x 200	900 x 900 x 200	900 x 900 x 200	900 x 900 x 200	900 x 900 x 200
Dimensions of the analogue display unit	mm	1035 x 700 x 177	1035 x 700 x 177	1035 x 700 x 177	1035 x 700 x 177	1035 x 700 x 177	1035 x 700 x 177	1035 x 700 x 177
Size of the instrument panel	mm	925 x 590	925 x 590	925 x 590	925 x 590	925 x 590	925 x 590	925 x 590
Diameter of the analogue instruments	mm	325	325	325	325	325	325	325

**EMEA-JA**  
 Snap-on Equipment s.r.l. - Via Prov. Carpi, 33 - 42015 Correggio (RE)  
 Phone: +39 0522 733-411 - Fax: +39 0522 733-479

**Austria**  
 Snap-on Equipment Austria GmbH - Hauptstrasse 24/Top 14 - A-2880 St. Corona/Wechsel (RE)  
 Phone: +43 1 865 97 84 - Fax: +43 1 865 97 84 29

**France**  
 Snap-on Equipment France - ZA du Vert Galant - 15, rue de la Guivernone BP 97175  
 Saint-Ouen-l'Aumône - 95056 Cergy-Pontoise CEDEX  
 Phone: +33 134 48 58-78 - Fax: +33 134 48 58-70

**Germany**  
 Snap-on Equipment GmbH - Konrad-Zuse-Straße 1 - 84579 Unterneukirchen  
 Phone: +49 8634 622-0 - Fax: +49 8634 5501

**Italy**  
 Snap-on Equipment s.r.l. - Via Prov. Carpi, 33 - 42015 Correggio (RE)  
 Phone: +39 0522 733-411 - Fax: +39 0522 733-410

**United Kingdom**  
 Snap-on Equipment Ltd. - Unit 17 Denney Road, King's Lynn - Norfolk PE30 4HG  
 Phone: +44 118 929-6811 - Fax: +44 118 966-4369