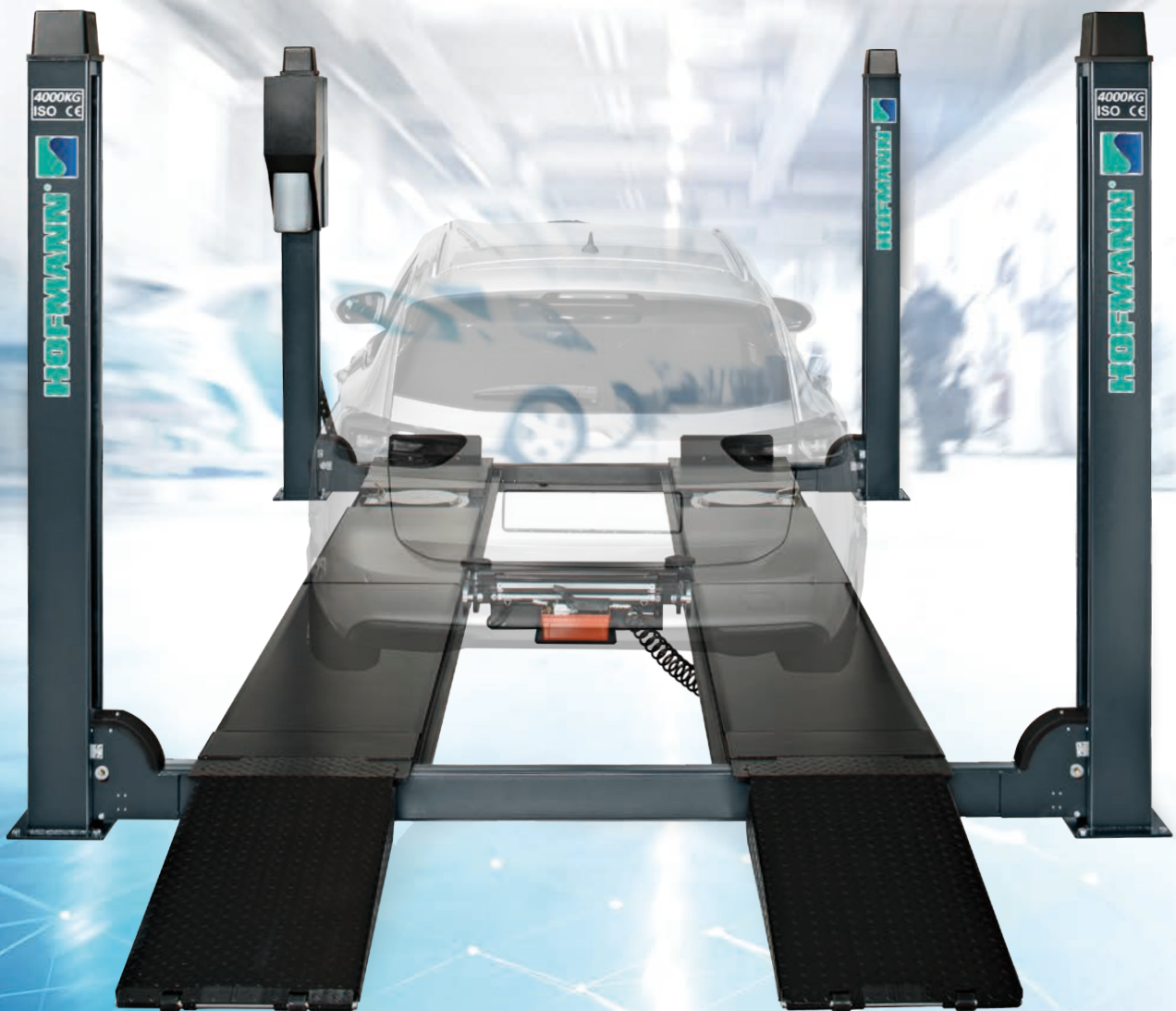


quattrolift® 4000



FOUR-POST ALIGNMENT LIFT

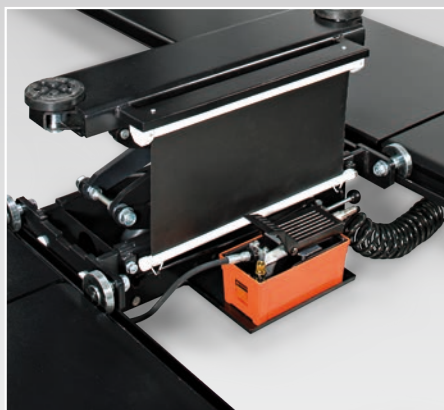
ENGINEERING UNLEASHED™



CONTROL UNIT

The compact control unit protects essential electrical components, the hydraulic power pack, and hydraulic synchronisation controls.

Designed for streamlined, user-friendly operation, it features an emergency switch and a comfort lowering mechanism that facilitates the automatic release of the carriage from its safety lock during the lift's descent.



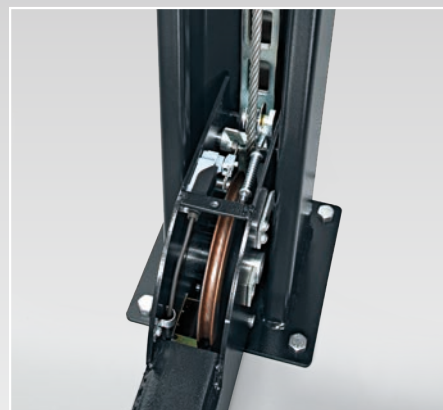
OPTIONAL JACK

The rolling jack increases versatility by providing a 3.000kg lifting capacity, allowing additional work such as brake service to be seamlessly performed.



OPTIONAL TURNTABLES

Effortlessly incorporated into the runways, these optional turntables may be positioned in three different positions to accommodate a wide array of wheelbases.



SAFETY LADDER

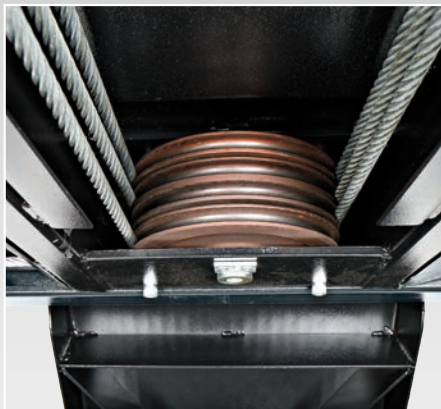
The lift is equipped with safety locks every 10cm, immobilising the runways in a securely locked position specifically intended for wheel alignment procedures.



INTEGRATED WHEEL-FREE LIFT

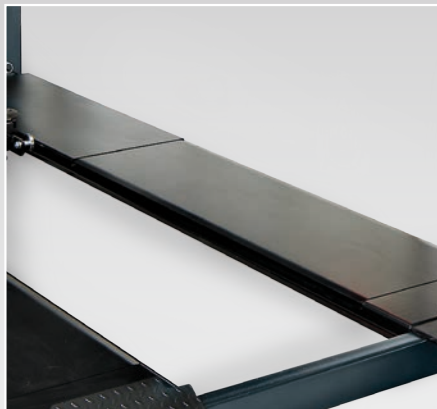
The integrated wheel-free lift of the **quattrolift 4000 WA WFL** boasts a platform length of 1500mm, with optional 200mm and 300mm extensions.

It is ideal for tyre service tasks and streamlines operations, allowing technicians to perform maintenance without additional equipment.



CABLE SYSTEM

Rugged brass pulleys play an essential role in prolonging the lifespan of the lift.



REAR SLIP PLATES

The integrated rear slip plates ensure that conducting a comprehensive four-wheel alignment on vehicles featuring wheelbases from 193-415cm. To optimise sliding performance, each slip plate is segmented into three sections, offering an impressive 120 rollers.



RAMPS

The ramps extend to a length of 106cm, facilitating a drive-on angle of 10 degrees, while ensuring that the total length of the entire lift system remains below 640cm.

4000 WA



4000 WA WFL

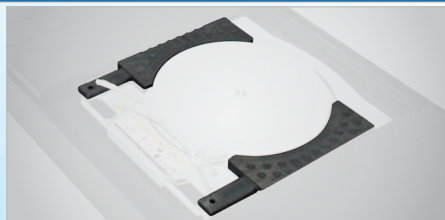


TECHNICAL SPECIFICATIONS	QUATTROLIFT 4000 WA	QUATTROLIFT 4000 WA WFL
Rated capacity of the lifting platform	4000 kg	4000 kg
Full rise height of the main lift	1830 mm	1850 mm
Drive on height	180 mm	225 mm
Runway length	5280 mm	5280 mm
Runway width	630 mm	630 mm
Length of rear slip plates	1980 mm	1980 mm
Front recess for turntables	1040 mm	1040 mm
Overall Length	6350 mm	6370 mm
Full rise time of the main lift	≤70 Sec	≤60 Sec
Min 4-wheel alignment	1930 mm	1930 mm
Max 4-wheel alignment	4150 mm	4150 mm
Rated capacity of the wheel-free lift	-	4000 kg
Rising height of the wheel-free lift	-	450 mm
Working pressure	Main lift ≥20MPa	Main lift ≥18MPa Wheel-free lift ≥21MPa
Power Supply	400V-3PH-50HZ	400V-3PH-50HZ
Motor	2.2kW	3.0 kW
Hydraulic oil	12L, 46# hydraulic oil	12L, 46# hydraulic oil

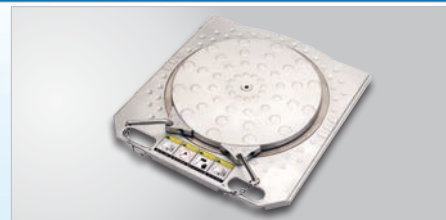
STANDARD ACCESSORIES



JACK FOR QUATTROLIFT



PADDLE KIT FOR PREMIUM TURNTABLE



PREMIUM TURNTABLE KIT

FIND A DISTRIBUTOR

AUSTRIA
+43 2641 24524

FRANCE
+33 134 48 58 78

GERMANY
+49 8671 96200 0

ITALY
+39 0522 733 411


Snap-on® Total Shop Solutions offers a wide range of garage equipment solutions for workshops, garages, car dealers and tyre shops, thanks to the specific solutions provided by its portfolio of premium brands. Hofmann® is a brand of TSS and is committed to product innovation and improvement. Therefore, specifications listed in this sell sheet may change without notice. ©2025 Snap-on Incorporated. Hofmann® is a trademark, registered in the United States and other countries, of Snap-on Incorporated. All rights reserved. All other marks are marks of their respective holders. sslr23064c (EU en) 12/2025

HOFMANN-EQUIPMENT.COM

HOFMANN®