

duolift® MTF C SERIES



ELECTRO-MECHANICAL 2-POST LIFTS

NEXT GENERATION SERIES ELECTRO-MECHANICAL LIFTS UNMATCHED PERFORMANCE & RUGGED DURABILITY

MTF 3000C

THE WORKSHOP CHAMPION

- Lifting capacity of 3.000kg
- Perfect for the independent workshop

MTF 3500C

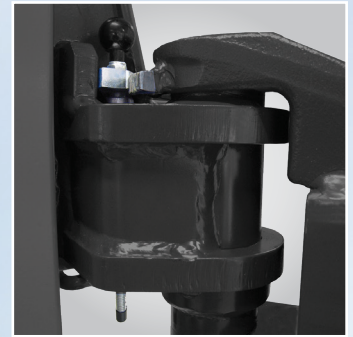
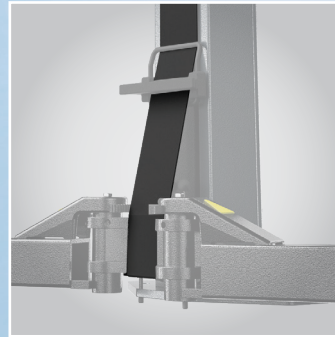
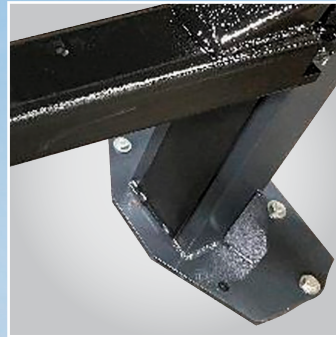
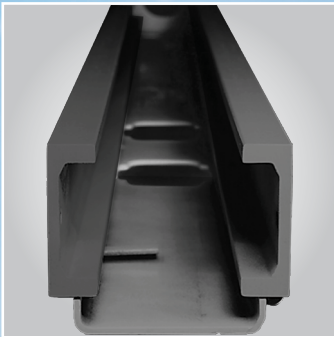
THE DEALERSHIP DYNAMO

- Lifting capacity of 3.500kg
- Ideal for the car dealership and EVs

MTF 4000C

THE VERSATILE POWERHOUSE

- Lifting capacity of 4.000kg
- Suitable for lifting cars, SUVs and vans



ROBUST COLUMNS

The duolift® MTF C Series hot-rolled steel profile columns are set at a 30° angle to improve the space for door opening. With a compact, robust design, the roll-formed columns feature a rubber protective band to shield against sparks from welding or repair operations on a vehicle on the lift. The lifting arms attach to the carriage with a heavy-duty reinforced pin housing, allowing bidirectional arm swing.



DURABLE CARRIAGE

The duolift® MTF C Series carriage has an integrated oil reservoir with six maintenance-free rollers that guide the carriage inside the columns and do not wear out like plastic sliding blocks.



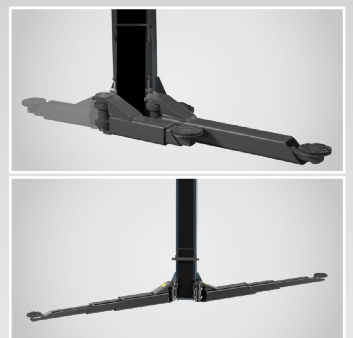
LOAD / SAFETY NUT

The duolift® MTF C Series uses a bronze alloy load nut with a cast alloy safety nut which outlasts nylon alternatives.



CABLE BRIDGE

The overhead cable bridge houses the power supply cable, motor synchronisation cable, and thermo switch cable, eliminating cable hazards for a safer working environment with adjustable height to suit workshop requirements and vehicle types.



2 & 3-STAGE ARMS

The MTF 3000C has two short 3-stage arms and two long 2-stage arms, while the MTF 3500C and MTF 4000C have four long 3-stage arms, offering various lifting possibilities.

CONTROL UNIT

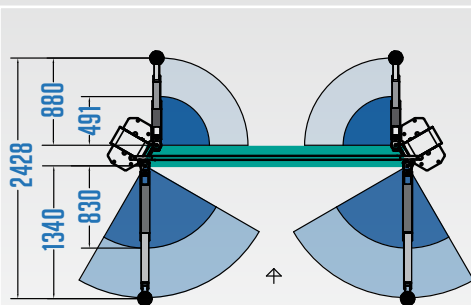
The duolift® MTF C Series is operated with a reverse switch that can be locked against misuse by a standard padlock.

CE STOP

Audible safety signal halts lowering at 200mm, protecting operators without bulky foot guards.

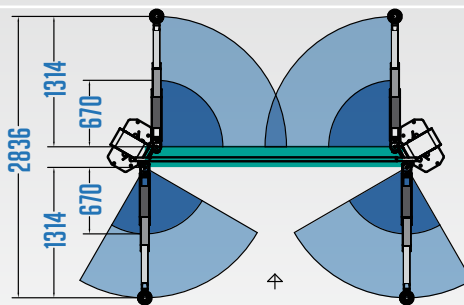


MULTIPLE LIFTING CAPACITIES



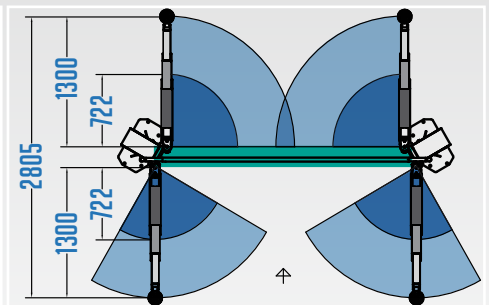
3000C

Lifting Capacity (kg)	3.000
Short Arm Extension (mm)	491-880
Long Arm Extension (mm)	830-1.340



3500C

Lifting Capacity (kg)	3.500
Front Arm Extension (mm)	670-1.314
Rear Arm Extension (mm)	670-1.314



4000C

Lifting Capacity (kg)	4.000
Front Arm Extension (mm)	722-1.300
Rear Arm Extension (mm)	722-1.300

duolift® MTF C SERIES



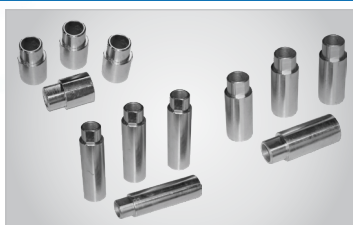
See datasheet for more details

TECHNICAL SPECIFICATIONS	MTF 3000C	MTF 3500C	MTF 4000C
Packing dimensions [cm]	280 x 80 x 70	280 x 80 x 70	280 x 80 x 70
Load capacity [kg]	3000	3500	4000
Load distribution	3:2 and 2:3	3:2 and 2:3	3:1
Short arm extension [mm]	491–880	670 – 1.314	722 - 1.300
Long arm extension [mm]	830–1.340	670 – 1.314	722 - 1.300
Installation width [mm]		3.400 - 3.500	
Height without cable bridge [mm]		2.561	
Height with cable bridge [mm]		4.100	
Drive Through width [mm]		2.277 - 2.377	
Lifting height [mm]		1.930 (+30)	
Pick up height [mm]		85 - 115	
Motor power [kW]		2 x 2,5	
Power Supply Voltage [V]		400	
Current consumption [A]		16	
Fuse protection [A gl slow]		20	

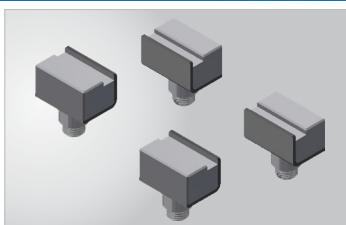
ADDITIONAL ACCESSORIES ARE AVAILABLE, PLEASE ASK YOUR REPRESENTATIVE



Tool Storage Trays



Pick-up Pad Extensions
50mm / 100mm / 150mm



Electric Vehicle Adaptors



Pick-up Pads for
Crafter & Sprinter 100mm

FIND A DISTRIBUTOR

AUSTRIA
+43 2641 24524

FRANCE
+33 134 48 58 78

GERMANY
+49 8671 96200 0

ITALY
+39 0522 733 411



Snap-on® Total Shop Solutions offers a wide range of garage equipment solutions for workshops, garages, car dealers and tyre shops, thanks to the specific solutions provided by its portfolio of premium brands. Hofmann® is a brand of TSS and is committed to product innovation and improvement. Therefore, specifications listed in this sell sheet may change without notice. ©2025 Snap-on Incorporated. Hofmann® is a trademark, registered in the United States and other countries, of Snap-on Incorporated. All rights reserved. All other marks are marks of their respective holders. sslr23074 (EU en) 9/2025