

PRODUCT CATALOGUE EUROPE



PRODUCT CATALOGUE EUROPE



TECHNOLOGY TO OVERCOME ANY CHALLENGE

WHEEL ALIGNERS

CONNECTED ALIGNERS

<i>Products</i>	4-5
<i>Features</i>	6
<i>At-a-Glance</i>	7

PRO42 ALIGNERS

<i>Products</i>	8-9
<i>Features</i>	10
<i>At-a-Glance</i>	11

WHEEL BALANCERS

<i>Products</i>	12-14
<i>Features</i>	15
<i>At-a-Glance</i>	14-15
TRUCK WHEEL BALANCERS	16-17

TYRE CHANGERS

<i>Products</i>	18-20
<i>Features</i>	21
<i>At-a-Glance</i>	20-21
TRUCK TYRE CHANGERS	22-23

AUTO LIFTS

FOUR-POST	25
DOUBLE SCISSOR	25
TWO-POST	26-27

MORE SOLUTIONS

<i>BT 1800 EV Battery Lift</i>	28
<i>EZ-ADAS ADAS Recalibration</i>	28
<i>H4 PRO Induction Heater</i>	28
<i>TREADREADER Tyre Measurement</i>	30



770

FEATURES

- Fast Compensation / Optimised Alignment Flow
- Advanced Notification System
- Audit Mode
- Auto Camera Tracking
- Ride Height
- Compact Mobile Design
- VODI™
- XD Camera Technology
- OEM Aftermarket Procedures
- EZ-Toe
- Advanced Dimensions
- Cloud Services
- AC400 Clamps / AC100 Clamps



VERSIONS

turntable/paddle kit	770 TT AC400	EEWAEU752B4
	770 TT AC100	EEWAEU752H4
	770 AC400	EEWAEU752B3
	770 AC100	EEWAEU752H3

678

FEATURES

- Fast Compensation / Optimised Alignment Flow
- Advanced Notification System
- Audit Mode
- Auto Camera Tracking
- Ride Height
- Mobility Kit
- VODI™
- XD Camera Technology
- OEM Aftermarket Procedures
- EZ-Toe
- Advanced Dimensions
- Cloud Services
- AC400 Clamps



VERSIONS

	678	EEWAEU715TB4
--	-----	--------------

660

FEATURES

- Fast Compensation / Optimised Alignment Flow
- Advanced Notification System
- Auto Camera Tracking
- Ride Height
- Mobility Kit
- VODI™
- XD Camera Technology
- EZ-Toe
- Advanced Dimensions
- Cloud Services
- AC100 Clamps



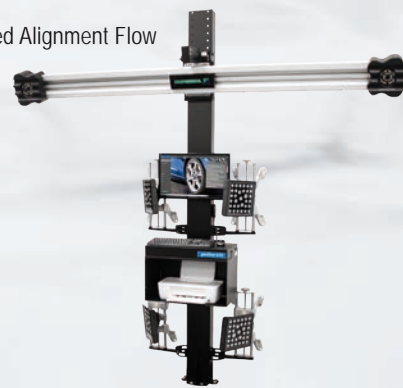
VERSIONS

movable beam, turntable/paddle kit	660 TT Lift AC100	EEWAEU712TH8
movable beam	660 Lift AC100	EEWAEU712TH5
turntable/paddle kit	660 TT AC100	EEWAEU712TH6
	660 AC100	EEWAEU712TH3

630

FEATURES

- Fast Compensation / Optimised Alignment Flow
- Advanced Notification System
- Remote Controlled Tilt Beam
- Small Footprint
- VODI™
- XD Camera Technology
- AC100 Clamps



VERSIONS

tilt beam	630 Tilt	EEWAEU721G1
fixed beam	630	EEWAEU721G

609

FEATURES

- Fast Compensation / Optimised Alignment Flow
- Advanced Notification System
- Tablet Primary Display
- Small Footprint
- Mobility Kit
- VODI™
- Cloud Services
- AC100 Clamps



VERSIONS

	609	EEWAEU741TH3
--	-----	--------------

320

FEATURES

- On-Rack and On-Car
- Advanced Notification System
- Small Footprint
- Completely Mobile
- Durable Camera Pods
- Rechargeable Batteries
- EZ-Toe
- Cloud Services
- AC700 Clamps



VERSIONS

	320	EEWAEU751H1
--	-----	-------------

FEATURES



ADVANCED NOTIFICATION SYSTEM

The advanced notification system provides critical information without slowing down the alignment process, automatically detecting and compensating suspension stress issues or environmental errors, only notifying the technician when necessary to provide additional information for corrective action.



AUDIT MODE

Quickly uncover extra service opportunities with alignment audit reports that include track width, front and rear toe, camber, wheelbase, wheel diameter, and cross dimensions.



COMPACT MOBILE DESIGN (770Q)

Efficient one-piece design with folding camera beam and integrated cabinet mobility allows the flexibility to move around the shop as needed.



MOBILITY KIT

The optional kit allows you to mount the cross-beam to the cabinet, enabling you to move the system around the shop freely and out of the way as needed.



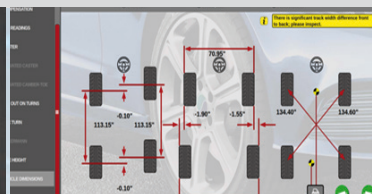
SMALL FOOTPRINT

Maximise shop floor space with a small console that takes up minimal shop space with easy storage for the printer and targets.



RECHARGEABLE BATTERIES (320)

On-cart, integrated battery charger stores the batteries while not in use, ensuring they remain charged and ready.



ADVANCED DIMENSIONS

Advanced vehicle dimensioning, including Cross Dimensions measurements to identify frame or structural damage before alignment adjustments are made, and Wheel Diameter to identify mismatched tyre sizes, a potential cause of vehicle pulling and drive train damage.



OEM AFTERMARKET PROCEDURES

The software provides the OEM recommended workflow for accurate wheel alignment in the aftermarket segment.



AUTO CAMERA TRACKING

Automatic camera tracking eliminates the need to readjust the camera after raising the lift, while a continuously calibrating third camera retains ultimate accuracy.



XD CAMERA TECHNOLOGY

Video speed cameras constantly monitor the alignment and immediately detect common environmental conditions or vehicle problems that can cause maladjustments.



ON-RACK AND ON-CAR (320)

XD camera pods utilise quick-release hardware that easily attaches to nearly any style of lift for the ultimate flexibility.



AC400 CLAMPS

The clamp attaches to the tyre with optimal force without touching the rim: ensuring a safe, fast, and consistent clamping experience.



EZ-TOE

Our advanced software makes it easy to quickly and accurately measure toe angle, allowing technicians to turn the wheel to access challenging adjustment points without using a steering wheel holder.



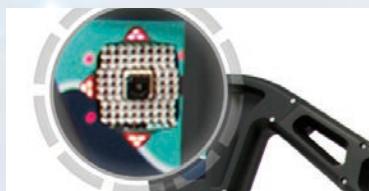
CLOUD SERVICES

Easily share service reports with your customers via email or print from anywhere in the shop.



ROTATING CAMERA BEAM

Design is simplified for better versatility and streamlined operation in smaller establishments.



VODI™

Our exclusive Vehicle Orientation Directional Indicator (VODI) guides technicians through the measurement process when the monitor is not in view, reducing the amount of time spent walking back and forth from the vehicle to the aligner.



DURABLE CAMERA PODS (320)

Built to stand the rigors of a working shop, these camera pods don't require special handling and can handle a hard day of work.



AC100 CLAMPS

Fast and easy to use with self-centring design, two-sided claws provide reliable clamping, even over hub caps.



FAST COMPENSATION/OPTIMISED ALIGNMENT FLOW

Streamline workflow with fast measurement compensation and an optimised alignment flow that enhances productivity by eliminating unnecessary steps in the alignment process.



RIDE HEIGHT

Eliminate manual data entry, speed up measuring, and increase accuracy using our specially designed, optional Ride Height Targets.



REMOTE CONTROLLED TILT BEAM (630)

A simple remote control allows technicians to tilt the beam quickly and easily.



TABLET PRIMARY DISPLAY

Complete tablet control provides the most flexible mobility options for alignment services, no matter what type of lift is used.



COMPLETELY MOBILE (320)

Easily use the geoliner 320 anywhere in your shop with a console that doubles as a viewing and charging station.



AC700 CLAMPS (320)

Lightweight, durable AC700 wheel clamps fit rims from 11"-22".



AT-A-GLANCE



geoliner Wheel Aligners
see versions on page 5

770

678

660

630

609

320

FEATURES

Advanced Notification System	•	•	•	•	•	•
Advanced Dimensions	•	•	•	—	—	—
EZ-Toe	•	•	•	•	•	•
Fast Compensation / Optimised Flow	•	•	•	•	•	—
Audit Mode	•	•	—	—	—	—
OEM Aftermarket Procedures	•	•	—	—	—	—
Cloud Services	•	•	•	—	•	•
Ride Height	•	•	•	—	—	—
Compact Mobile Design	•	—	—	—	—	—
Auto Camera Tracking	•	•	•	—	—	—
Rotating Camera Beam	—	—	—	—	•	—
Remote Controlled Tilt Beam	—	—	—	•	—	—
Mobility Kit	—	•	•	—	—	—
XD Camera Technology	•	•	•	•	—	—
VODI™	•	•	•	•	•	•
Tablet Primary Display	—	—	—	—	•	—
Small Footprint	—	—	—	•	•	•
On-Rack and On-Car	—	—	—	—	—	•
Durable Camera Pods	—	—	—	—	—	•
Completely Mobile	—	—	—	—	—	•
Rechargeable Batteries	—	—	—	—	—	•
Wheels Off Adjustment	•	•	•	—	—	—
AC400 Clamps	•	•	—	—	—	—
AC100 Clamps	•	—	•	—	•	—
AC700 Clamps	—	—	—	—	—	•

TECH SPECS

geoliner 770

geoliner 678

geoliner 660

geoliner 630

geoliner 609

geoliner 320

Tyre Diameter (AC400)	19-39in 48-99cm	N/A	N/A	N/A	N/A
Wheel Diameter (AC100)	11-22in 28-56cm				
Track Width	48-96in 122-244cm				
Wheelbase	79-180in 201-457cm				60-180in 152-457cm
Power Supply	110-240V 50/60Hz				



790

FEATURES

- Drive-Through Design
- Audit Mode
- Auto Camera Tracking
- Ride Height
- Mobility Kit
- VODI™
- OEM Procedures
- EZ-Toe
- Advanced Dimensions
- Advanced Measurements
- Modified Vehicles
- Customisable Alignment Procedures
- Wheels Off Adjustment
- AC400 Clamps / AC100 Clamps



VERSIONS

turntable/paddle kit	790 TT AC400	EEWAEU753B8
	790 TT AC100	EEWAEU753H8
	790 AC400	EEWAEU753B1
	790 AC100	EEWAEU753H1

680

FEATURES

- Ride Height
- Mobility Kit
- VODI™
- OEM Procedures
- EZ-Toe
- Advanced Dimensions
- Advanced Measurements
- Modified Vehicles
- Customisable Alignment Procedures
- Wheels Off Adjustment
- AC400 Clamps / AC100 Clamps



VERSIONS

movable beam	680 XD Lift AC400	EEWAEU714H2
	680 XD Lift AC100	EEWAEU714G2
fixed beam	680 XD AC400	EEWAEU714H1
	680 XD AC100	EEWAEU714G1

670

FEATURES

- Mobility Kit
- VODI™
- OEM Procedures
- EZ-Toe
- Advanced Dimensions
- Modified Vehicles
- Wheels Off Adjustment
- AC400 Clamps / AC100 Clamps



VERSIONS

movable beam, turntable/paddle kit	670 XD TT Lift AC400	EEWAEU715H3
	670 XD TT Lift AC100	EEWAEU715G3
turntable/paddle kit	670 XD TT AC400	EEWAEU715H4
	670 XD TT AC100	EEWAEU715G4
movable beam	670 XD Lift AC400	EEWAEU715H2
	670 XD Lift AC100	EEWAEU715G2
fixed beam	670 XD AC400	EEWAEU715H1
	670 XD AC100	EEWAEU715G1

650

FEATURES

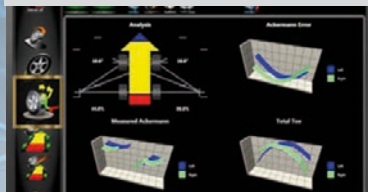
- Moveable Camera Beam
- Mobility Kit
- VODI™
- EZ-Toe
- Modified Vehicles
- Customisable Alignment Procedures
- AC100 Clamps



VERSIONS

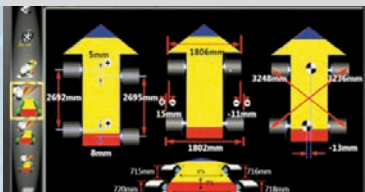
movable beam	650 XD Lift	EEWAEU712G1
fixed beam	650 XD	EEWAEU712G2

FEATURES



ADVANCED MEASUREMENTS

Measurements designed for advanced suspension troubleshooting and modified suspensions, including advanced ride height entry, pro-Ackerman, graphical caster trail, scrub radius, and SAI.



ADVANCED DIMENSIONS

Advanced vehicle dimensioning, including Cross Dimensions measurements to identify frame or structural damage before alignment adjustments are made, and Wheel Diameter to identify mismatched tyre sizes, a potential cause of vehicle pulling and drive train damage.



OEM PROCEDURES

The software provides the recommended procedures defined by the manufacturer and indicates the correct clamps for an accurate OEM-specified wheel alignment.



EZ-TOE

Our advanced software makes it easy to quickly and accurately measure toe angle, allowing technicians to turn the wheel to access challenging adjustment points without using a steering wheel holder.



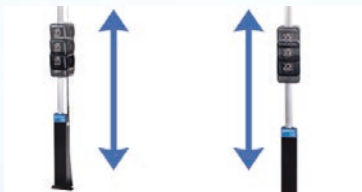
DRIVE-THROUGH DESIGN (790)

The dual-tower design can accommodate larger-width vehicles by allowing the technician to position the towers apart at optimal distances. This also leaves space at the front of the vehicle to perform other tasks such as ADAS recalibration.



MOBILITY KIT (790)

The optional mobility kit allows for easy relocation of the XD camera alignment towers within the shop, giving the ability to move between bays or out of the way, as needed.



AUTO CAMERA TRACKING (790)

Automatic camera tracking eliminates the need to readjust the camera after raising the lift, while a continuously calibrating third camera retains ultimate accuracy.



AUDIT MODE (790)

Quickly uncover extra service opportunities with alignment audit reports that include track width, front and rear toe, camber, wheelbase, wheel diameter, and cross dimensions.



RIDE HEIGHT

Eliminate manual data entry, speed up measuring, and increase accuracy using our specially designed, optional Ride Height Targets.



VODI™

Our exclusive Vehicle Orientation Directional Indicator (VODI) guides technicians through the measurement process when the monitor is not in view, reducing the amount of time spent walking back and forth from the vehicle to the aligner.



MOVEABLE CAMERA BEAM (650)

Using the optional moveable camera support, the camera beam can be adjusted up and down with the keyboard.



MOBILITY KIT

The optional kit allows you to mount the cross-beam to the cabinet for flexible installation and usage, enabling you to move the system around the shop freely and out of the way as needed.



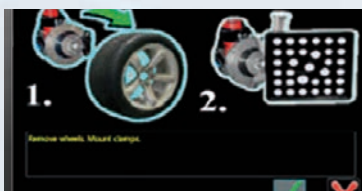
MODIFIED VEHICLES

Ensure accurate alignment for vehicles that have modified OEM specifications with our advanced alignment software that allows for effortless changes in procedure flow.



CUSTOMISABLE ALIGNMENT PROCEDURES

Easily modify alignment procedure flow by selecting the steps needed to perfectly meet the exact needs of your shop.



WHEELS OFF ADJUSTMENT

Remove the wheel and attach the target directly to a brake rotor for easier access to adjustment.



AC400 CLAMPS

The clamp attaches to the tyre with optimal force without touching the rim; ensuring a safe, fast, and consistent clamping experience.



AC100 CLAMPS

Fast and easy to use with self-centring design, two-sided claws provide reliable clamping, even over hub caps.

AT-A-GLANCE



geoliner Wheel Aligners
see versions on page 9

790

680 XD

670 XD

650 XD

FEATURES				
Drive-Through Design	•	—	—	—
Moveable Camera Beam	—	—	—	•
Audit Mode	•	—	—	—
Auto Camera Tracking	•	—	—	—
Ride Height	•	•	—	—
Mobility Kit	•	•	•	•
VODI™	•	•	•	•
OEM Procedures	•	•	•	—
EZ-Toe	•	•	•	•
Advanced Dimensions	•	•	•	—
Advanced Measurements	•	•	•	•
Modified Vehicles	•	•	•	•
Customisable Alignment Procedures	•	•	—	•
Wheels Off Adjustment	•	•	•	—
AC400 Clamps	•	•	•	—
AC100 Clamps	•	•	•	•
TECH SPECS	geoliner 790	geoliner 680 XD	geoliner 670 XD	geoliner 650 XD
Tyre Diameter (AC400)	19-39in 48-99cm			N/A
Wheel Diameter (AC100)	11-22in 28-56cm			
Track Width	48-96in 122-244cm			
Wheelbase	79-180in 201-457cm			
Power Supply	110-240V 50/60Hz			

WHEEL BALANCERS



8250-2P

FEATURES

- Radial and Lateral Runout
- Automatic Data Entry
- Automatic Spoke Detection
- Semi-Automatic Lift
- Semi-Automatic Data Entry
- smartSonar™
- easyWeight™
- Power Clamp™
- geodata™ Gauge Arm
- Split Weight Mode
- Stop in Position
- Rim Lighting
- Touchscreen Interface
- QuickBAL™
- Telescopic Wheel Guard



VERSIONS

wheel lift	8250-2p	EEWB770CEA
no wheel lift	8200-2p	EEWB766BE1

7850-2P

FEATURES

- Automatic Data Entry
- Automatic Spoke Detection
- Semi-Automatic Lift
- Semi-Automatic Data Entry
- smartSonar™
- easyWeight™
- Power Clamp™
- geodata™ Gauge Arm
- Split Weight Mode
- Stop in Position
- Rim Lighting
- Touchscreen Interface
- QuickBAL™
- Telescopic Wheel Guard



VERSIONS

wheel lift	7850-2p	EEWB754CEA
no wheel lift	7800-2p	EEWB753BE1

7750P

FEATURES

- Semi-Automatic Lift
- Semi-Automatic Data Entry
- smartSonar™
- easyWeight™
- Power Clamp™
- geodata™ Gauge Arm
- Split Weight Mode
- Stop in Position
- Rim Lighting
- geoTOUCH™
- QuickBAL™
- Telescopic Wheel Guard



VERSIONS

wheel lift	7750p	EEWB773BEA
no wheel lift	7700p	EEWB772APE1
no lift, quick nut	7700l	EEWB772AE1

7600P

FEATURES

- Semi-Automatic Data Entry
- smartSonar™
- easyWeight™
- Power Clamp™
- Split Weight Mode
- Stop in Position
- Rim Lighting
- Touchscreen Interface
- QuickBAL™
- Wheel Guard



VERSIONS

power clamp	7600p	EEWB751APE1
no stop in position, quick nut clamp	7600l	EEWB751AE1

7500P

FEATURES

- Semi-Automatic Data Entry
- smartSonar™
- easyWeight™
- Power Clamp™
- Split Weight Mode
- Raised Digital LED Display
- QuickBAL™
- Wheel Guard



VERSIONS

power clamp	7500p	EEWB760APE1
quick nut clamp	7500l	EEWB760AE1

7340P

FEATURES

- Semi-Automatic Data Entry
- smartSonar™
- easyWeight™
- Power Clamp™
- Split Weight Mode
- Stop in Position
- geoTOUCH™
- QuickBAL™
- Wheel Guard



VERSIONS

power clamp	7340p	EEWB774APE1
quick nut clamp	7340l	EEWB774AE1
no easyWeight	7340s	EEWB774AS1

7300P

FEATURES

- Semi-Automatic Data Entry
- smartSonar™
- easyWeight™
- Power Clamp™
- Split Weight Mode
- Integrated Digital LED Display
- QuickBAL™
- Wheel Guard

VERSIONS

power clamp	7300p	EEWB759APE1
quick nut clamp	7300l	EEWB759AE1
no easyWeight	7300s	EEWB759AS1



7200S

FEATURES

- Semi-Automatic Data Entry
- smartSonar™
- Split Weight Mode
- Monitor and Integrated Touchpad
- Quick Nut Wheel Clamp
- QuickBAL™
- Wheel Guard

VERSIONS

with smartSonar	7200s	EEWB768AS1
no smartSonar	7200	EEWB768AE1



7100

FEATURES

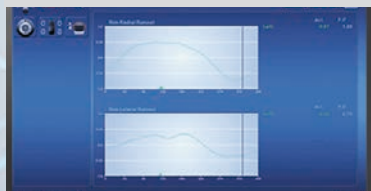
- Hand-Operated Gauge Arm Data Entry
- Split Weight Mode
- QuickBAL™
- Integrated Digital Display
- Wheel Guard

VERSIONS

wheel guard	7100	EEWB767AE1
no wheel guard	7100n	EEWB767AE9



FEATURES



RADIAL AND LATERAL RUNOUT

Provide an accurate measurement of the radial and lateral runout, indicating wheel assembly possibilities of roundness improvement.



AUTOMATIC SPOKE DETECTION

The laser scanner automatically detects the number and position of rim spokes for the system to indicate weight placement behind wheel spokes and allow for split weights.



AUTOMATIC DATA ENTRY

No manual data entry is required; this machine automatically detects the wheel dimensions and selects the balancing mode, weight type, and weight position to speed up the balancing cycle time and minimise operational errors.



SEMI-AUTOMATIC DATA ENTRY

Hand-operated gauge arm with easyALU™ assisted rim data entry for diameter and distance. Touch the rim with the gauge arm to enter the rim dimensions and automatically select the weight balancing mode.



SMARTSONAR™

Automatic rim width detection using sonar sensors to avoid manual entry errors.



EASYWEIGHT™

Take the guesswork out of weight placement; this pinpoint accurate system uses a laser to show the exact spot to place a weight to ensure precise balancing.



POWER CLAMP™

The electromechanical power clamping device always clamps the wheel accurately with a constant force and provides a reliable and consistent condition to assure accurate and repeatable measurements.



SPLIT WEIGHT MODE

This feature allows for accurate balancing with easy-to-follow manual procedures to hide the weights behind the spokes, preserving the wheel's visual presentation.

AT-A-GLANCE



8250-2p



7850-2p



7750p



7600p



7500p



7340p



7300p



7200s



7100

geodyna Wheel Balancers
see versions on pages 13-14

FEATURES

FEATURES	8250-2p	7850-2p	7750p	7600p	7500p	7340p	7300p	7200s	7100
Radial and Lateral Runout	•	—	—	—	—	—	—	—	—
Automatic Data Entry	•	•	—	—	—	—	—	—	—
Automatic Spoke Detection	•	•	—	—	—	—	—	—	—
Semi-Automatic Data Entry	—	—	•	•	•	•	•	•	—
smartSonar™	•	•	•	•	•	•	•	•	—
easyWeight™	•	•	•	•	•	•	•	—	—
Power Clamp™	•	•	•	•	•	•	•	—	—
geodata™ Gauge Arm	•	•	•	—	—	—	—	—	—
Split Weight Mode	•	•	•	•	•	•	•	•	•
Stop in Position	•	•	•	•	—	•	—	—	—
Rim Lighting	•	•	•	•	—	—	—	—	—
Touchscreen Interface	•	•	•	•	—	•	—	—	—
geoTOUCH™	—	—	•	—	—	•	—	—	—
Raised Digital LED	—	—	—	—	•	—	—	—	—
Integrated Digital LED	—	—	—	—	—	—	•	—	•
Monitor / Integrated Touchpad	—	—	—	—	—	—	—	•	—
Quick Nut Wheel Clamp	—	—	—	—	—	—	—	•	•
QuickBAL™	•	•	•	•	•	•	•	•	•
Wheel Guard	•	•	•	•	•	•	•	•	•

TECH SPECS

TECH SPECS	8250-2p	7850-2p	7750p	7600p	7500p	7340p	7300p	7200s	7100
Max Wheel Diameter	42in 107cm								37.8in 96cm
Max Wheel Weight	154 lbs. 70 kg								
Max Rim Width	20in 51cm								
Power Supply	230V 50/60Hz								
Dimensions HxWxL	62x40x76in 157x102x194cm			72x34x52in 183x87x131cm				72x31x40in 183x78x101cm	67x40x43in 171x100x110cm

FEATURES CONTINUED



STOP IN POSITION

Touch the screen to automatically rotate the wheel to the weight application position.



RIM LIGHTING

Bright LED lighting system that facilitates rim cleaning and aids in the weight positioning process.



QUICKBAL™

Optimises the number of revolutions according to each wheel's specifications while always operating at maximum speed and reducing cycle time.



WHEEL LIFT

The ultimate wheel lift for fast and smooth handling of wheels up to 70 kg. The wheel is automatically raised to the last centring height and the platform automatically returns to rest position, thus reducing floor-to-floor cycle time.



GEODATA® GAUGE ARM

The geodata® gauge arm provides comfortable weight application at the 12 o'clock position with automatic arm stop when in place, ideally suited for accurate placement of adhesive weights – comfortable weight application as a practical alternative to easyWEIGHT™.

TRUCK WHEEL BALANCERS



4800-2L

FEATURES

- Raised Monitor and Touchpad
- Virtual Plane Imaging (VPI)
- Quick Nut Wheel Clamp
- Semi-Automatic Parameter Entry
- Gauge Arm with Weight Clamp
- Alloy Mode Selection
- Pneumatic Loading Device

VERSIONS

≡	4800-2L	EEWB711BE4
---	---------	------------



980L

FEATURES

- Raised Digital LED Display
- Virtual Plane Imaging (VPI)
- Quick Nut Wheel Clamp
- Semi-Automatic Parameter Entry
- Gauge Arm with Weight Clamp
- Alloy Mode Selection
- Pneumatic Loading Device

VERSIONS

≡	980L	6028708
---	------	---------



FEATURES



VIRTUAL PLANE IMAGING (VPI)

This patented technology, insensitive to ambient conditions, creates a virtual plane of the wheel between the sensors, eliminating external influences such as temperature variation or vibrations, ensuring the most accurate balancing results.



GAUGE ARM WITH WEIGHT CLAMP

The gauge arm guides the technician to the correct position inside the rim and is equipped with a patented wheel weight clamp to hold the weight in the correct position during weight placement.



ALLOY MODE SELECTION

A series of five different positions for customised weight placement, ideal for the wide variety of wheel designs on the market today.



SELF-CALIBRATION

The self-calibration feature allows users the ability to recalibrate the machine in just two steps, avoiding costly service calls.



QUICK NUT WHEEL CLAMP

An easy-to-use manual clamping device that allows a secure attachment of the wheel to the balancer shaft.



PNEUMATIC LOADING DEVICE

This lift helps facilitate the clamping of heavy truck wheels and offers ample storage space for cones, centring stars, and wing nuts.



RAISED MONITOR AND TOUCHPAD (4800-2L)

Raised monitor and touchpad for convenient operational control.



RAISED DIGITAL LED DISPLAY (980L)

Raised LED display and control panel.

AT-A-GLANCE

geodyna Wheel Balancers		4800-2L	980L
FEATURES			
Raised Monitor and Touchpad		•	—
Raised Digital LED Display		—	•
Virtual Plane Imaging (VPI)		•	•
Quick Nut Wheel Clamp		•	•
Semi-Automatic Parameter Entry		•	•
Gauge Arm with Weight Clamp		•	•
Alloy Mode Selection		•	•
Split Weight Mode		•	•
Self-Calibration		•	•
Pneumatic Loading Device		•	•
TECH SPECS		4800-2L	980L
Max Wheel Diameter		51in 130cm	
Max Wheel Weight		550 lbs. 250 kg	
Power Supply		230V 50/60Hz	
Dimensions HxWxD		76x55x54in 193x140x137cm	

TYRE CHANGERS



8800P

FEATURES

- powerMONT™
- quickLOK™ / Wireless Command
- smartSpeed™
- Top-Side Bead Seater*
- Dynamic Bead Breaker
- On-Floor Bead Breaker†
- Control Panel
- Pneumatic Wheel Lift
- Lower Bead Camera View
- Centre-Post Clamp
- Pneumatic Bead Pusher
- wdk Certified

VERSIONS

	8800p	EEWH778AE1
<i>no camera, lift opt.</i>	8800g	EEWH778AE4
<i>no cam, wireless, tsbs*, lift opt.</i>	8800s	EEWH778AE3
<i>no cam, wireless, tsbs* ofbb†, lift opt.</i>	8800b	EEWH778AE2



8700G

FEATURES

- powerMONT™
- Manual Clamp
- smartSpeed™
- Dynamic Bead Breaker
- Control Panel
- Top-Side Bead Seater*
- Lower Bead Camera View
- Centre-Post Clamp
- Pneumatic Bead Pusher
- wdk Certified

VERSIONS

	8700g	EEWH770AE4
<i>no camera, tsbs*</i>	8700b	EEWH770AE2



3550 GP PLUS

FEATURES

- smartSpeed™
- On-Floor Bead Breaker†
- Top-Side Bead Seater*
- Sliding Clamping Jaws
- Tilt-Tower
- Pneumatic Bead Assist†
- Pneumatic Vertical Arm
- Tool Box w/Integrated Air Pressure Gauge
- wdk Certified

VERSIONS

	3550 GP* plus	EEWH712AEQ
<i>no tsbs*</i>	3550 plus	EEWH712AER
<i>no plus kit</i>	3550 GP*	EEWH712AEO
<i>no tsbs*, plus kit</i>	3550	EEWH712AEP



3300 RACING GP PLUS

FEATURES

- Low-Height Ergonomic Cabinet
- smartSpeed™
- On-Floor Bead Breaker†
- Top-Side Bead Seater*
- Sliding Clamping Jaws
- Tilt-Tower
- Pneumatic Bead Assist†
- Pneumatic Vertical Arm
- Tool Box with Integrated Air Pressure Gauge
- wdk Certified

VERSIONS

	3300 racing GP* plus	EEWH763AES
<i>no tsbs*</i>	3300 racing plus	EEWH763AEM
<i>no plus kit</i>	3300 racing GP* EM†	EEWH763AEI
<i>no tsbs*, plus kit</i>	3300 racing EM†	EEWH763AE8



3300-24 GP PLUS

FEATURES

- smartSpeed™
- On-Floor Bead Breaker†
- Top-Side Bead Seater*
- Sliding Clamping Jaws
- Tilt-Tower
- Pneumatic Bead Assist†
- Tool Box with Integrated Air Pressure Gauge
- wdk Certified

VERSIONS

	3300-24 GP* plus	EEWH762AEQ
<i>no tsbs*</i>	3300-24 plus	EEWH762AEM
<i>no plus kit, em†</i>	3300-24 GP*	EEWH762AEF
<i>no tsbs*, plus kit</i>	3300-24 EM†	EEWH762AED
<i>no tsbs*, plus kit, em†</i>	3300-24	EEWH762AE1



3300-22 GP PLUS

FEATURES

- smartSpeed™
- On-Floor Bead Breaker†
- Top-Side Bead Seater*
- Tilt-Tower
- Pneumatic Bead Assist†
- wdk Certified

VERSIONS

	3300-22 GP* plus	EEWH761AE9
<i>no tsbs*</i>	3300-22 plus	EEWH761AE8
<i>no plus kit, em†</i>	3300-22 GP*	EEWH761AE5
<i>no tsbs*, plus kit</i>	3300-22 EM†	EEWH761AE3
<i>no tsbs*, plus kit, em†</i>	3300-22	EEWH761AE1



3300-20 GP PLUS

FEATURES

- On-Floor Bead Breaker
- Top-Side Bead Seater*
- Tilt-Tower
- Pneumatic Bead Assist†
- wdk Certified

VERSIONS

	3300-20 GP* plus	EEWH765AES
no tsbs*	3300-20 plus	EEWH765AEP
no plus kit	3300-20 GP*	EEWH765AEG
no tsbs*, plus kit	3300-20 EM†	EEWH765AE9
no tsbs*, plus kit, em†	3300-20	EEWH765AEG



1270

FEATURES

- On-Floor Bead Breaker
- Swing-Arm

VERSIONS

≡	1270 smart	EEWH764AE1
---	------------	------------



MOTO

FEATURES

- smartSpeed™
- On-Floor Bead Breaker
- Tilt-Tower
- Pneumatic Bead Assist
- Motorcycle Mounting Head
- Motorcycle Adaptors

VERSIONS

≡	moto smartSpeed	EEWH772AE1
---	-----------------	------------



FEATURES



POWERMONT™

Our leverless mount/demount tool synchronises with the dynamic bead breaker for optimum positioning. Featuring upgraded steel and plastic protection, this innovative system is a perfect tool for RFT, UHP, OEM's and low-aspect-ratio tyres.



DYNAMIC BEAD BREAKER

The precisely controlled synchronised dual-disk system accurately positions both the upper and lower beads while minimising the chance of wheel damage. Includes an adjustable tilt for tyres with stiff sidewall.



ON-FLOOR BEAD BREAKER (PEDAL-OPERATED)

Traditional side-shovel bead breaker with ergonomic pedal-control positioned away from the shovel; the fastest solution for standard, soft sidewall, and high-aspect tyres.



QUICKLOK™

A powerful, electromechanical device that firmly clamps onto a variety of wheels without the need for wheel protection.



WIRELESS COMMAND

The centre-post clamping system can be operated by wireless command in the shaft handle.



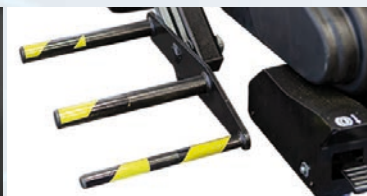
SMARTSPEED™

The innovative self-adjusting technology provides the optimum torque and maximises the rotation speed for safe, efficient operation.



CONTROL PANEL

The user-friendly control panel employs a color-coded layout and tool-matching controls to ensure easy navigation..



PNEUMATIC WHEEL LIFT

The pedal-operated pneumatic wheel lift assists in lifting heavy wheels to reduce technician fatigue and increase productivity.



TOP-SIDE BEAD SEATER

This ergonomic hand-held nozzle injects a high-speed blast of air into the tyre to raise the bead and seal the tyre to the rim.



LOWER BEAD CAMERA VIEW

The lower bead camera provides a clear view on the control panel monitor for lower bead breaking.



CENTRE-POST CLAMP

The centre-post clamp design has numerous benefits, most important is the drastically reduced risk of wheel damage and less clamping restriction than the turntable design.



SLIDING CLAMPING JAWS

A quick adjustment of the jaws position gives a wide clamping range. The short cylinder rod makes the clamping fast.

AT-A-GLANCE

versions on pages 19-20

monty Tyre Changers



8800p

8700g

3550

3300 racing

3300-24

3300-22

3300-20

1270

moto

FEATURES

FEATURES	8800p	8700g	3550	3300 racing	3300-24	3300-22	3300-20	1270	moto
powerMONT™	•	•	—	—	—	—	—	—	—
Dynamic Bead Breaker	•	•	—	—	—	—	—	—	—
On-Floor Bead Breaker	•	—	•	•	•	•	•	•	•
quickLOK™	•	—	—	—	—	—	—	—	—
Wireless Command	•	—	—	—	—	—	—	—	—
Manual Clamp	—	•	—	—	—	—	—	—	—
smartSpeed™	•	•	•	•	•	•	—	—	•
Control Panel	•	•	—	—	—	—	—	—	—
Pneumatic Wheel Lift	•	•	—	—	—	—	—	—	—
Top-Side Bead Seater	•	•	•	•	•	•	•	—	—
Lower Bead Camera View	•	•	—	—	—	—	—	—	—
Centre-Post Clamp	•	•	—	—	—	—	—	—	—
Sliding Clamping Jaws	—	—	•	•	•	—	—	—	—
Tilt-Tower	—	—	•	•	•	•	•	—	•
Swing-Arm	—	—	—	—	—	—	—	•	—
Pneumatic Bead Pusher	•	•	—	—	—	—	—	—	—
Pneumatic Bead Assist	—	—	•	•	•	•	•	—	•
Pneumatic Vertical Arm	—	—	•	•	—	—	—	—	—
Tool Box w/Air Gauge	—	—	•	•	•	—	—	—	—
"Plus" Configuration	—	—	•	•	•	•	•	—	—
wdk Certified	•	•	•	•	•	•	•	—	—

TECH SPECS

TECH SPECS	8800	8700	3550	3300 racing	3300-24	3300-22	3300-20	1270	moto
Max Rim Diameter	30in 76cm		26in 66cm	24in 61cm			22in 56cm		24in 61cm
Max Tyre Width	15in 38cm		17in 43cm	15in 38cm	13in 33cm			12in 31cm	11in 28cm
Max Rim Width	14in 36cm		16in 41cm	14in 36cm	12in 31cm			11in 28cm	10in 25cm
Max Wheel Diameter	47in 120cm			39in 100cm					
Power Supply	230V 1ph 50-60Hz 16A						400V 3ph 50Hz 5.5A		230v 1ph 50Hz 16A
Air Pressure Required	116-174 PSI 8-12 bar								
Dimensions HxWxD	74x58x73in 188x148x186cm		89x68x76in 226x172x192cm	67x76x64in 169x192x162cm	73x75x63in 185x190x160cm	73x70x63in 185x178x160cm		68x45x49in 173x115x125cm	75x70x60in 190x178x152cm

FEATURES



TILT-TOWER

The pneumatic Tilt-Tower post provides maximum clearance for installing the tyre on the turntable.



SWING-ARM

The mounting arm swings to the side so that the machine can be installed in a space-saving way directly near a wall.



PNEUMATIC BEAD PUSHER

The Pneumatic Bead Pusher assists in the mounting process of the upper bead. Its dual-purpose design offers a reverse-side hook to help lift heavy tyres.



PNEUMATIC BEAD ASSIST

Our three-piece Pneumatic Bead Assist features a top roller, pressing foot, and lifting disk, to make it simple for a single technician to mount and demount low-profile and high-performance tyres.



PNEUMATIC VERTICAL ARM

Fast and ergonomic, the pneumatic vertical arm facilitates positioning of the mounting head on all wheels.



TOOL BOX WITH INTEGRATED AIR PRESSURE GAUGE

The tool box provides a fixed storage area with four convenient shelves for tools, valves, and accessories, with an integrated air pressure gauge.



"PLUS" CONFIGURATION

"Plus" models are equipped with Pneumatic Bead Assist and the "Plus" Accessories Kit to fulfill the WDK requirements and enable the correct mounting and demounting of UHP and run-flat tyres.



WDK CERTIFIED

Our tyre changers are approved and certified according to the strict and rigorous guidelines provided by the prestigious Wirtschaftsverband daer deutschen Kautschukindustrie e.V. (WDK), German Rubber Manufacturers Association.

TRUCK TYRE **CHANGERS**



5800WL

FEATURES

- Wireless Control Unit*
- Vast 14 to 58-inch Clamping Range
- Automatic Rotation of Mounting Tool
- Preset Tool Carriage
- Non-Return Valve
- 38 kN Bead Breaker Force
- 2-Speed Chuck
- 2.2-3.0 kW Chuck Motor



VERSIONS

	5800WL	6028204
control unit on swing-arm	5800BA	6028212
mobile control unit	5800B	6028208

4400

FEATURES

- Mobile Control Unit
- 14 to 44-inch Clamping Range
- Tilting Bead Breaker Disc
- Non-Return Valve
- 33 kN Bead Breaker Force
- 2-Speed Chuck
- 1.5-2.2 kW Chuck Motor



VERSIONS

	4400	6027220
--	------	---------

4250

FEATURES

- Mobile Control Unit
- 14 to 32-inch Clamping Range
- Tilting Bead Breaker Disc
- Non-Return Valve
- 33 kN Bead Breaker Force
- 2-Speed Chuck
- 1.3-1.8 kW Chuck Motor



VERSIONS

	4250	6028985
--	------	---------

3850

FEATURES

- Mobile Control Unit
- 14 to 26-inch Clamping Range
- Tilting Bead Breaker Disc
- Non-Return Valve
- 27 kN Bead Breaker Force
- 1.8 kW Chuck Motor



VERSIONS

	3850	6027219
--	------	---------

FEATURES



MOBILE CONTROL UNIT

Remote control console allows one technician to safely monitor all tyre changing operations.



NON-RETURN VALVE

A non-return valve prevents the chuck arm from falling down in case of a sudden hydraulic pressure drop.



BEAD BREAKER

The bead breaker disc is equipped with a special tilting system to assist bead breaking and ensure the disc is in the optimum position.

AT-A-GLANCE

monty truck Tyre Changers	5800wl	4400	4250	3850	
FEATURES					
Wireless Mobile Control Unit	•	—	—	—	
Mobile Control Unit	•	•	•	•	
Automatic Mounting Tool	•	—	—	—	
Preset Tool Carriage	•	—	—	—	
Non-Return Valve	•	•	•	•	
Adjustable Bead Breaker	•	•	•	—	
Two-Speed Chuck	•	•	•	—	
TECH SPECS		5800wl	4400	4250	3850
Max Rim Diameter	58in 147cm	44in 112cm	32in 81cm	26in 66cm	
Max Tyre Width	99in 250cm	43in 110cm			28in 70cm
Max Rim Width	43in 110cm	—	43in 110cm	28in 70cm	
Max Wheel Diameter	99in 250cm	90in 230cm	92in 235cm	59in 150cm	
Max Wheel Weight	4400 lbs. 2000 kg	3300 lbs. 1500 kg			2200 lbs. 1000 kg
Power Supply	400V 3ph 50Hz				
Dimensions HxWxD	80x82x118in 202x210x299cm	42x117x81in 106x298x205cm	58x83x83in 148x210x210cm	33x66x55in 84x167x140cm	

AUTO LIFTS



quattrolift® FOUR-POST LIFT

4000WA

FEATURES

- Ramps
- Control Unit
- Safety Ladder
- Rear Slip Plates
- Cable System
- Optional Jack
- Optional Turntables

VERSIONS

≡ 4000 WA EELS726A



TECH SPECS	quattrolift 4000 WA
Lifting Capacity	8800 lbs. 4000 kg
Configuration	Closed Front
Overall Width	130" 331cm
Overall Height	92" 234cm
Max Lifting Height	72" 183cm
Lifting Time	70 seconds
Power Requirements	380-400V 50 Hz 3Ph

variolift® DOUBLE SCISSOR LIFT

3500

FEATURES

- Drive-On Ramps
- Hydraulic System
- Adjustable Platforms
- Control Unit
- Sturdy Structure

VERSIONS

≡ 3500 EELS732AB1



TECH SPECS	variolift 3500
Lifting Capacity	7000 lbs. 3500 kg
Configuration	Open Front
Overall Width	72"-80" 183-203cm
Overall Height Flush Mount	70,5" 179cm
Overall Height Surface Mount	75" 191cm
Max Lifting Height	75" 191cm
Lifting Time	48 seconds
Power Requirements	400V 3Ph 50/60 Hz

FEATURES



HYDRAULIC SYSTEM

Hydraulic cylinders with internal flow control valves and two independent hydraulic circuits provide safe, controlled lowering. Compressed air is not required to lock/unlock the structure.



STURDY STRUCTURE

Our rugged and robust steel frame provides a powerful lifting capacity while chrome-plated pivot pins and fibre-wound bushings increase performance life with no need for lubrication.



ADJUSTABLE PLATFORMS

Our adjustable lifting platforms with locking ramps extend from 147-214cm to accommodate longer wheelbase vehicles. The low drive-over height provides safe loading for low-chassis.



DRIVE-ON RAMPS

The ramps extend to provide an additional 33cm on each side with easy lock/unlock and hinge down and away by 54 degrees to allow access to wheel service areas.



CONTROL UNIT

The compact control unit protects critical electrical components, hydraulic power pack and hydraulic synchronisation controls.

FEATURES



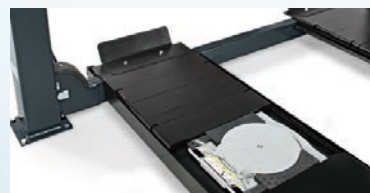
REAR SLIP PLATES

The integrated rear slip plates enable 4-wheel alignment on all vehicles with wheelbases from 193-415cm, each slip plate has three sections with a total of 120 rollers.



CONTROL UNIT

Simple and easy to understand, with emergency switch and comfort lowering, which allows the automatic release of the carriage from the safety lock when lowering the lift.



OPTIONAL TURNTABLES

The optional turntables are perfectly integrated into the runways and can be placed in three different positions to support a wide range of wheelbases.



OPTIONAL JACK

The optional rolling jack increases the functional versatility of the lift with a 3000 kg lifting capacity for additional work, such as brake service.



SAFETY LADDER

The lift is equipped with safety locks every 10cm to set the runways in the locked position for wheel alignment.



RAMPS

The ramps are 106cm long, making the drive-on angle of 10 degrees possible, keeping the overall length of the complete lift to less than 640cm.



CABLE SYSTEM

The rugged brass pulleys ensure the long life of the lift.

duolift® TWO-POST LIFT

HL 4500 STD

FEATURES

- Electro-hydraulic drive
- Three-stage Arms
- Versymmetric® Technology
- Carriage Clearance
- Flexible Installation
- Comfort Lowering
- Safety Lock
- CE Stop Optimum Safety
- Shut-off Bar
- Adjustable pick-up pads



VERSIONS

overall height 156" / 169"	3950mm / 4300mm	HL 4500 STD	EELS721A
overall height 181" / 195"	4600mm / 4950mm	HL 4500 TALL	EELS722A

HL 3500 STD

FEATURES

- Electro-hydraulic drive
- Three-stage Arms
- Versymmetric® Technology
- Carriage Clearance
- Flexible Installation
- Comfort Lowering
- Safety Lock
- CE Stop Optimum Safety
- Shut-off Bar
- Adjustable pick-up pads



VERSIONS

overall height 154" / 3902mm	HL 3500 STD	EELR792A
overall height 168" / 4267mm	HL 3500 TALL	EELR793A

HL 5500

FEATURES

- Electro-hydraulic drive
- Three-stage Arms
- Carriage Clearance Door Protection
- Flexible Installation
- Comfort Lowering
- Safety Lock
- CE Stop
- Shut-off Bar
- Adjustable pick-up pads



VERSIONS

HL 5500	EELS746A-7016
---------	---------------

BTE 3200

FEATURES

- Electro-mechanical drive
- Crossbeam
- Without base frame
- Asymmetrical design
- Automatic arm locks
- Specially rolled column profile
- Rolled-thread lifting spindles
- Adjustable pick-up pads
- Automatic lubrication system



MTF 3000

FEATURES

- Electro-mechanical drive
- Without base frame
- Asymmetrical design
- Low pick-up height
- Automatic arm locks
- Synchronised drive motors
- Rolled-thread lifting spindles
- Adjustable pick-up pads
- Automatic lubrication system









GTE 2500

FEATURES

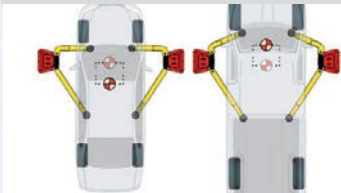
- With base frame
- Asymmetrical design
- Low pick-up height
- Automatic arm locks
- Electro-mechanical drive
- Rolled-thread lifting spindles
- Adjustable pick-up pads
- Automatic lubrication system



AT-A-GLANCE

						
duolift 2-post Lifts	HL 4500 STD	HL 3500 STD	HL 5500	BTE 3200	MTF 3000	GTE 2500
FEATURES						
Electro-hydraulic Drive	•	•	•	—	—	—
Electro-mechanical Drive	—	—	—	•	•	•
Three-stage Arms	•	•	•	—	—	—
Versymmetric® Technology	•	•	—	—	—	—
Symmetrical Lifting	—	—	•	—	—	—
Asymmetrical Lifting	—	—	—	•	•	•
Adjustable Crossbeam	—	—	—	•	•	—
Comfort Lowering	•	•	•	—	—	—
Ergonomic Controls	•	•	•	—	—	—
Safety Lock	•	•	•	—	—	—
CE Stop Optimum Safety	•	•	•	—	—	—
Shut-off Bar	•	•	•	—	—	—
Adjustable Pick-up Pads	•	•	•	•	•	•
Automatic Lubrication System	—	—	—	•	•	•
Arm Locks	—	—	•	•	•	•
TECH SPECS						
Lifting Capacity	10000 lbs. 4500 kg	7700 lbs. 3500 kg	12000 lbs. 5500 kg	7000 lbs. 3200 kg	6600 lbs. 3000 kg	5500 lbs. 2500 kg
Configuration	Versymmetric®	Versymmetric®	Symmetric	Asymmetric	Asymmetric	Asymmetric
Overall Width	142in 360cm	134in 341cm	152in 387cm	98in 251cm	88,5in 225cm	101in 256cm
Overall Height	156-169in 395-430cm	154in 390cm	181-195in 460-496cm	76in 193cm	138-165in 350-420cm	77in 197cm
Max Lifting Height	77,5in 197cm	77,5in 197cm	80in 202cm	76in 193cm	74in 189cm	77in 197cm
Lifting Time	30 seconds	30 seconds	47 seconds	45 seconds	45 seconds	45 seconds
Power Requirements	400-415V 50Hz 3Ph	400-415V 50Hz 3Ph	400-415V 50Hz 3Ph	400-415V 50Hz 3Ph	400-415V 50Hz 3Ph	400-415V 50Hz 3Ph

FEATURES



VERSYPHMETRIC® TECHNOLOGY

Combining the advantages of an asymmetric and symmetric lift, Versymmetric Technology improves ergonomics when placing the arms to lift the car.



CARRIAGE CLEARANCE

The lifting carriage has a rugged design with integrated grease fitting and optimal door clearance with a rubber guard on the carriage to protect the car door.



ERGONOMIC CONTROLS

Operation controls are in an ergonomic place on the primary column with clear indications of each operation.



SAFETY LOCK

The lock is active during the complete lifting process: simply pressing the lock button, the carriage lock activates as needed.



COMFORT LOWERING

The lift will automatically raise to release the carriage from the safety lock and automatically lower the vehicle.



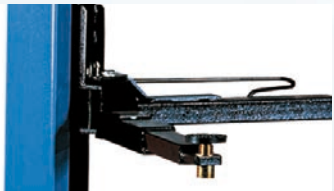
SHUT-OFF BAR

The safety shut-off bar prevents damage to the top of a vehicle, immediately stopping the lift when it is touched.



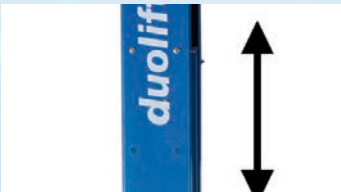
CARRIAGE AND ARMS

Easy accommodation of lower chassis vehicles thanks to the 10-centimetre minimum pick-up height.



AUTOMATIC LUBRICATION SYSTEM

Lifting nuts made of wear-proof Nylatron® and automatic lubrication of lifting screws and safety nuts.



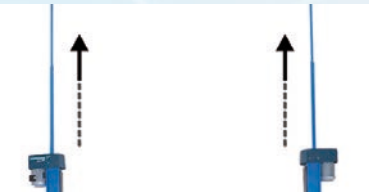
FLEXIBLE INSTALLATION

The lift is available in two versions that can be installed in two different heights: low and high.



THREE-STAGE ARMS

Front and rear three-stage arms always allow perfect access to the pick-up points of the vehicle.



ADJUSTABLE CROSSBEAM

The crossbeam is vertically adjustable to suit customer requirements.



CE STOP OPTIMUM SAFETY

An integrated CE stop replaces mechanical foot protectors to ensure technician safety.

MORE SOLUTIONS

EV BATTERY LIFT

BT 1800

FEATURES

The BT 1800 hydraulic mobile lifting table is designed to handle batteries of electric vehicles, as well as engine, gearbox, drive axle, fuel tank, suspension and chassis components of traditional vehicles.

Designed for safe and robust EV battery management, the BT 1800 delivers a convenient, portable double-scissor table lift, ideal for EV service and battery pack replacement.

VERSIONS

BT 1800	EELS910AB2
---------	------------



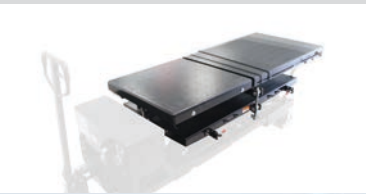
TECH SPECS		BT 1800	
Lifting capacity	4000 lbs. 1800 kg	Base height	13in 325mm
Rise height	79in 2000mm	Overall length	116in 2956mm
Collapsed height	34in 870mm	Power supply	12V DC battery (not incl.)
Platform height adjust	1,8in 45mm	Charging voltage	90-264V 1Ph 50/60 Hz
Platform angle adjust	3°-6°	Motor	1,5kW
Platform length (max)	81in 2066mm	Full stroke time	55 seconds
Platform width	31,5in 800mm		

FEATURES



BATTERY-OPERATED

The rechargeable 12-volt DC power supply provides full flexibility around the workshop, as no power supply cable is required. The battery level is clearly indicated on the control panel, with ON/OFF switch and power inlet to charge the battery.



ADJUSTABLE TABLE

The sliding working table expands in length from 1741-2066mm, moving freely with 2-directional tilt adjustment up to 45mm, allowing for precise compensation of uneven floors, providing a proper mount/demount process for EV batteries.



TILT-ADJUSTMENT

The tilt adjustment mechanism is equipped with ball-bearing washers and a handle for easier movement, even with weight. Integrated quick clamps lock the platform in place to restrict movement once the position is fixed.



ROBUST FRAME

The strong and rugged steel, double scissor structure with a powerful hydraulic cylinder providing 1800 kg of lifting capacity and 2000mm rise height.



MOBILE

A large pallet jack handle and wheels facilitate easy movement of the lift. The additional handle provides easy positioning of the battery lift table under the vehicle by a second person.



REMOVABLE HANDLE

The additional handle provides easy positioning of the battery lift table under the vehicle by a second person. The handle is inserted into a sleeve and secured with a pin for easy removal when it isn't needed.



STURDY CONSTRUCTION

The 200mm rear wheels are equipped with metal protectors designed to withstand up to 2400 kg of force.

ADAS RECALIBRATION

EZ-ADAS

FEATURES

The EZ-ADAS Recalibration System is an innovative collection of precision tools with leading-edge design. Featuring intuitive, laser-guided target placement, the system is guaranteed to ensure accurate, error-free positioning and increase shop productivity.

VERSIONS

Basic	EESE900BKEU
Deluxe	EESE900DXEU



KIT COMPONENTS	Basic	Deluxe
Target Stand	•	•
Alignment Fixture	•	•
Alignment Fixture w/ Laser	•	•
Laser Assembly (2)	•	•
Alignment Plate	•	•
Tape Rule	•	•
Tape Rule Stand	•	•
Extension Arm (2)	•	•
Rear Alignment Plate	—	•
Radar Alignment Stand	—	•

FEATURES



DEM-BASED CENTRELINE SETUP PROCESS

EZ-ADAS utilises a visible centreline that helps speed up the placement of targets and increase accuracy.



PRECISION LASER TECHNOLOGY

Reduce the risk of errors with laser technology that drastically cuts down on the number of steps required to achieve ADAS calibration.



EASY TARGET PLACEMENT

With our precision laser technology, EZ-ADAS allows technicians of all skill levels to quickly and accurately place the necessary targets.



COMPACT FOLDING DESIGN

Our space-saving design easily folds up and rolls out of the way for storage when not in use.



MOBILE APP SUPPORT

Our exclusive mobile app provides 3D videos that guide technicians through target placement and provide helpful diagnostic tools.

INDUCTION HEATER

H4 PRO

FEATURES

Designed for light repair services, the H4PRO delivers the best productivity available in today's compact and mobile induction heaters.

VERSIONS

H4 PRO	EECR852A
--------	----------



TECH SPECS	H4 Pro
Input power	3,7kW
Main supply	204V, 1-phase, 50-60Hz
Working frequency	15-30kHz
Built-in water capacity	2 liters
Hose cable length	3 meters
Dimension LxWxH	17x13x12,5in 44x33x32cm
Weight	13kg
Duty cycle max. power (20°C)	9 minutes
Display	5-inch color screen

FEATURES



PRESET CONFIGURATIONS

The H4PRO is loaded with preset heating programs for different types of services. There are no complicated processes. Simply select the ideal configuration in our user-friendly software, and H4PRO is all set to make your challenging work easier than ever before.



WHEEL ALIGNMENT APPLICATION

Shops that specialise in tyre and alignment can rely on H4PRO to speed up their daily tasks. Controlled heat is applied directly to the suspension screw without overheating the material or its surroundings to loosen rusty nuts, bolts and tie rods easier, safer and faster.



COLLISION REPAIR APPLICATION

H4PRO is the right tool for high-volume collision shops. Customised heating programs help perform dent repair without damaging the vehicle body and loosen door seals efficiently so the technician can better focus on the task at hand.



SERVICE APPLICATION

Ideal for service shops with a wide range of applications, removing rusty nuts, bolts on steering, exhaust, suspension and braking systems. H4PRO makes it easier, safer and faster.

MORE SOLUTIONS

TreadReader™ TYRE INSPECTION

HAND HELD

FEATURES

- Compact, easy-to-use tyre tread depth measurement device
- Provides detailed tread depth analysis
- Ideal for all tyre inspection applications
- Use in open areas or confined workshop environments



VERSIONS

≡	Hand Held	EETDEU913A
---	-----------	------------

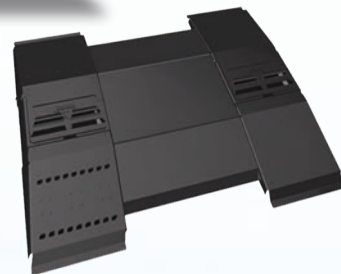
TECH SPECS	Hand Held
Laser class	Class 2
Maximum tread depth	0,9in 23mm
Patch scanned	2in 50mm across the whole tyre
Measurement accuracy	< 0,008in < 0,2mm
Operating temperature	32°-122°F 0°-50°C
Communication	Bluetooth Low Energy (BLE)
Environmental rating	IP 64
Power	5V DC rechargeable battery w/ USB 3.1 Type C / 100-240 VAC
Dimensions LxWxH	7x3,5x2,8in 180x90x70mm
Weight	1,5 lbs. 660g

TreadReader™ TYRE INSPECTION

DRIVE OVER

FEATURES

- Optimal for workshops with a larger footprint or 'drive through' facility
- Suitable for all vehicle inspection volumes, especially high-volume or continuous traffic

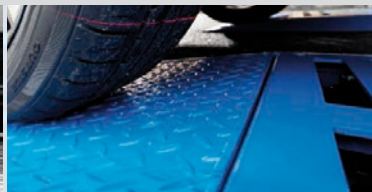


VERSIONS

Drive Over Flush Mount	EETDEU907A
Drive Over Surface Mount	EETDEU904A

TECH SPECS	Drive Over
Laser Class	Class 3R
Maximum scan width	23,6in 600mm across two scan zones
Scan measurement	1,4-2in 35-50mm cross section of tyre
Measurement accuracy	< 0,008in < 0,2mm
Operating temperature	32°-122°F 0°-50°C
Communication	Ethernet
Environmental rating	IP67
Power	Control Cabinet 110- 220VAC, 1A w/ 12VDC, 2A supplied to the ramp
Maximum vehicle speed	4-8 mph 6,5-13 km/h
Cycle time	12-15 seconds
Maximum axle weight	5500 lbs. 2500 kg

FEATURES



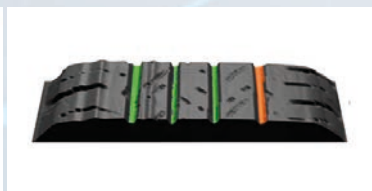
TYRE MEASUREMENT TECHNOLOGY

TreadReader produces detailed 3D images that show the tyre tread conditions with absolute clarity – surpassing the accuracy and reliability of traditional dip gauges and non-contact measurement devices.



RESULTS REPORT

TreadReader produces an operator report incorporating vehicle ID and colour-coded tread depth indicators that can be printed or emailed from the app.



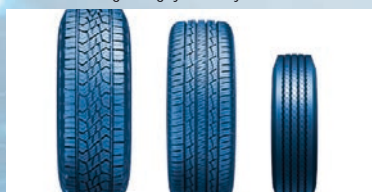
PREDICTIVE MAINTENANCE

To ensure vehicle safety, a routine inspection of the tyre condition is critical – TreadReader technology makes it fast and easy. TreadReader accurately detects tyre tread to show wear patterns and predict tread life. Scan details can be presented to the customer in an inspection report, providing critical information regarding tyre safety.



TREADMANAGER

Cloud-based management platform that guides the scanning process, stores tyre scans, and allows access to saved data – providing service reports and sales opportunities for tyres and wheel alignment.



VERSATILE SCANNING

TreadReader can read tyres from passenger cars, light-duty trucks, and utility trailers and provides a scan report for one to six tyres.



TOTAL SHOP SOLUTIONS

Snap-on® Total Shop Solutions (TSS) offers a wide range of equipment solutions for workshops, garages, car dealers, and tyre shops, thanks to the specific solutions provided by its portfolio of premium brands.

As a brand of TSS, Hofmann is committed to providing innovative and reliable wheel solutions to the auto repair industry.

Snap-on

SUN

JohnBean

Mitchell1

BLACKHAWK

HOFMANN

KU KANSAS JACK

BOXER

NEXIQ TECHNOLOGIES

CARTEC

CL Challenger Lifts

PRO-CUT BRAKE SOLUTIONS

ECOTECHNICS

CAR-O-LINER

JOSAM

truckCam

autoVHC

DEALER-FX



Snap-on® Total Shop Solutions offers a wide range of garage equipment solutions for workshops, garages, car dealers and tyre shops, thanks to the specific solutions provided by its portfolio of premium brands. Hofmann® is a brand of TSS and is committed to product innovation and improvement. Therefore, specifications listed in this sell sheet may change without notice. ©2024 Snap-on Incorporated. Hofmann is a trademark, registered in the United States and other countries, of Snap-on Incorporated. All rights reserved. All other marks are marks of their respective holders. 04/2024 ssmi22432a

HOFMANN-EQUIPMENT.COM