

HOFMANN® 

geoliner® **678**



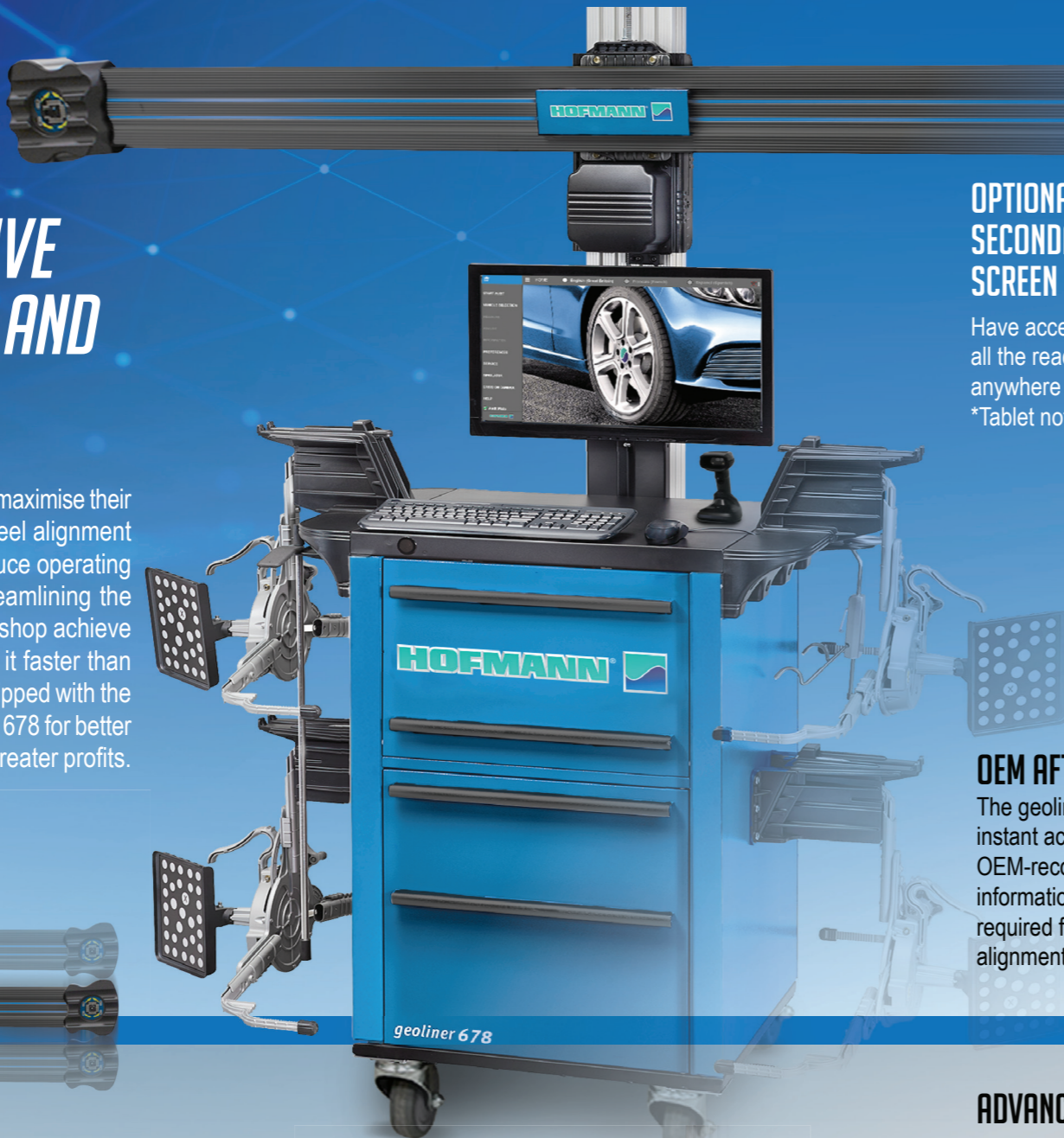
PRECISION WHEEL ALIGNMENT

ENGINEERING UNLEASHED™

geoliner® 678

ADVANCED, INTUITIVE DESIGN FOR QUICK AND EASY ALIGNMENTS

With the geoliner® 678, automotive shops can maximise their profitability by investing in an advanced wheel alignment system. This superior technology helps reduce operating costs and increases productivity while streamlining the entire alignment process. Not only will your shop achieve precision results – you'll also be able to do it faster than ever before! Make sure your business is equipped with the best tool for the job, and choose the geoliner® 678 for better performance, more efficient operation and greater profits.



OPTIONAL SECONDARY SCREEN

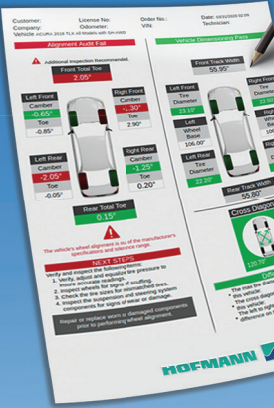
Have access to all the readings from anywhere in the shop.
*Tablet not included



PROFITS GROW AS SERVICE OPPORTUNITIES ARISE.

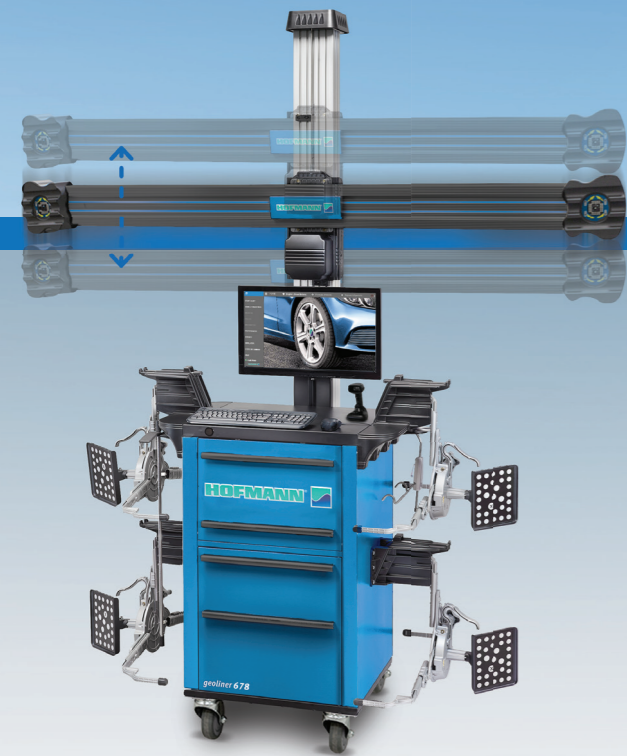
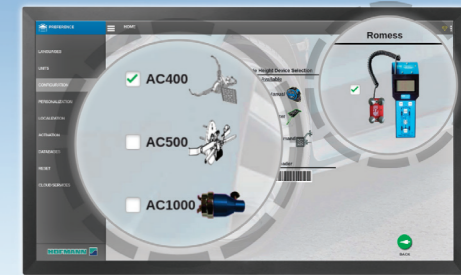
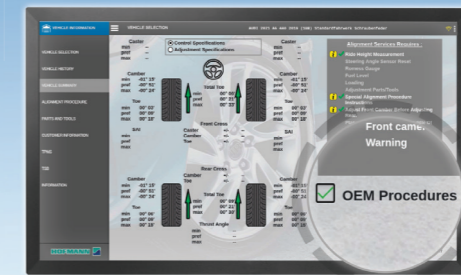
AUDIT MODE

Scan every vehicle with our unique Audit Mode function which performs a fast verification of the vehicle by measuring the front and rear toe, track width, camber, wheelbase, wheel diameter and cross dimensions. This will help identify any alignment problems so you can sell more services and keep your aligner operating at full-service to increase your shop's revenue.



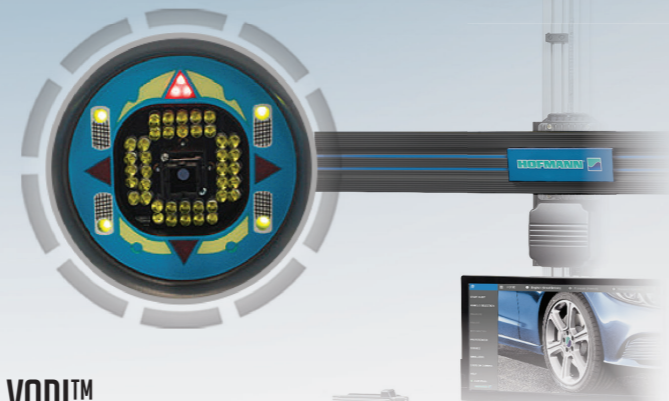
OEM AFTERMARKET PROCEDURES

The geoliner® 770 advanced software offers instant access to real-time aftermarket OEM-recommended adjustments and repair information, as well as the correct clamps required for precise, OEM-specified wheel alignment service.



AUTOMATIC HEIGHT TRACKING

Automatic height tracking follows the vehicle as it is raised and lowered on the lift, eliminating the need for manual readjustment of the camera and reducing time spent at the console.



VODI™

Using simple, easy-to-follow red and green LED lights, our patented Vehicle Orientation Directional Indicator (VODI™) leads technicians through the measuring procedure while the monitor is not in view, decreasing the time spent moving back and forth between vehicle and aligner.

ADVANCED ADJUSTMENTS

- ✓ EZ-Toe
- ✓ A-Arm
- ✓ Cradle
- ✓ Single Tie Rod
- ✓ Drag Link
- ✓ Toe Curve
- ✓ Elevated
- ✓ Wheels Off



EZ-TOE

Turn the front wheels and access difficult adjustment points while still displaying centered toe readings.

WHEELS OFF MODE

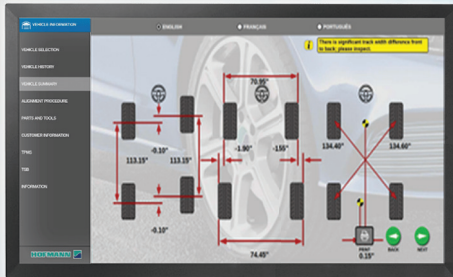
Allows easy access to hard-to-reach adjustments.

CRADLE

This functionality enables caster and camber adjustments in vehicles where front-end adjustments are not directly available, by shifting the vehicle's cradle.

ADVANCED MEASUREMENTS

Measurements designed for advanced suspension troubleshooting and modified suspensions, including ride height, SAI, frame angle, max turn and toe out on turns.



XD CAMERA TECHNOLOGY

Cutting-edge high-definition video speed cameras continuously monitor the alignment process and instantly detect common environmental conditions or vehicle issues with the potential to cause misalignment.

QUICK COMPENSATION AND OPTIMIZED ALIGNMENT FLOW

Boost productivity by eliminating unnecessary steps. The alignment process is greatly enhanced by our quick measurement compensation and optimised alignment flow, which also enables shops to grow their alignment business through increased productivity.

SMART NOTIFICATION SYSTEM

Our smart notification system maximises efficiency and accuracy by automatically identifying and fixing issues like suspension stress or environmental errors, and only requires technician intervention when more information is needed to take different corrective action.

CLOUD SERVICES

Quickly email or print service reports for clients from anywhere in the shop.

AC400 CLAMPS



Clamp attaches to the tyre with limited clamping force without touching the rim for a safe, fast and consistent placement every time.

AC100 CLAMPS



Fast and easy to use with self-centring design, two-sided claws provide reliable clamping, even over hub caps.

RIDE HEIGHT MEASUREMENT



Eliminate manual data entry, speed up measuring, and increase accuracy using our specially designed, optional Ride Height Targets.

MOBILITY KIT

For flexible installation and usage, the cross-beam can be mounted to the cabinet using the optional mobility kit.

TECHNICAL SPECIFICATIONS

Track Width	48-96" 122-244cm
Tyre Diameter - AC400	19-39" 48-99cm
Rim Size - AC100	11-22" 28-56cm
Power Supply	100-230V 50/60Hz

STANDARD ACCESSORIES

Two Wheel Chocks	Brake Pedal Depressor
Steering Wheel Holder	Color Printer

FIND A DISTRIBUTOR

hofmann-equipment.com/en/distributor

AUSTRIA
+43 2641 24524

FRANCE
+33 134 48 58 78

GERMANY
+49 8634 622 0

ITALY
+39 0522 733 411



Snap-on® Total Shop Solutions offers a wide range of garage equipment solutions for workshops, garages, car dealers and tyre shops, thanks to the specific solutions provided by its portfolio of premium brands. Hofmann® is a brand of TSS and is committed to product innovation and improvement. Therefore, specifications listed in this sell sheet may change without notice. ©2023 Snap-on Incorporated. Hofmann® is a trademark, registered in the United States and other countries, of Snap-on Incorporated. All rights reserved. All other marks are marks of their respective holders. sswa23020 12/2023

