

**HOFMANN**® 



*geoliner*® 609



**PRECISION WHEEL ALIGNMENT**

*ENGINEERING UNLEASHED™*

geoliner® 609

# UNCOMPROMISING FEATURES MINIMAL SHOP SPACE NO CONSOLE NEEDED

Introducing the latest addition to the Hofmann® Imaging Alignment family – the geoliner® 609 has all the same core features of our advanced imaging alignment systems in a compact, economical design. Ready out of the box with minimal installation, this alignment system offers a greater lift compatibility with a taller vertical post and two-wheel elevated compensation mode - making the geoliner 609 a flexible alignment solution to support in-house alignment services.

## EFFICIENT DESIGN

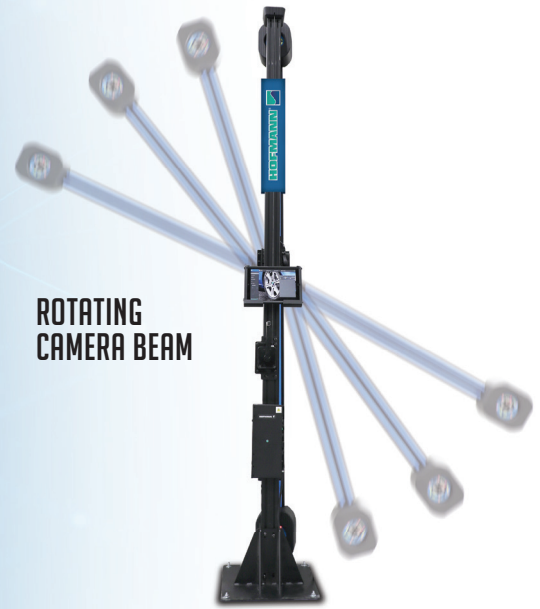
- Pre-assembled, ready-to-install
- Lightweight, allows one-person installation
- Robust mechanical winch for precise camera beam movement

## INTELLIGENT SOFTWARE TOOLS

- Elevated two-wheel compensation mode for customers with limited space, no alignment lift, or vehicles too large for the lift
- Predictive alignment flow and automatic error detection
- Video-speed imaging for fast roll-back compensation

## ONLINE CONNECTIVITY

- Network updatable software and specifications
- Quick access to vehicle specifications and repair information, TSBs, recalls, TPMS, ADAS information
- Cloud services printing

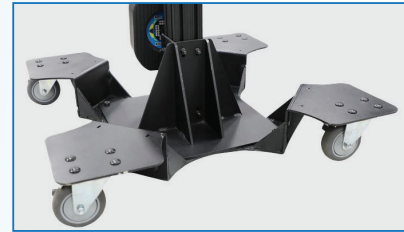


ROTATING  
CAMERA BEAM



## AC100 CLAMPS

Fast and easy to use with self-centring design, two-sided claws provide reliable clamping, even over hub caps.



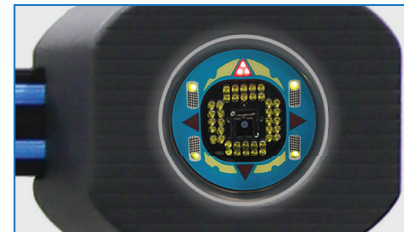
## MOBILITY CART (OPTIONAL)

Increases mobility by moving the wheel aligner freely through the shop. (EAK0363J88A)



## TABLET OPERATED

Fully mobile and allows you to perform alignments on any alignment lift type.



## VODI™

Guides the technician through the measurement process, increasing productivity.

## TECHNICAL SPECIFICATIONS

Track Width	48-96"   122-244cm
Rim Size - AC100	11-22"   28-56cm
Power Supply	100-230V 50/60Hz

## STANDARD ACCESSORIES

Brake Pedal Depressor

Steering Wheel Holder

Two Wheel Chocks

Color Printer

## FIND A DISTRIBUTOR

[hofmann-equipment.com/en/distributor](http://hofmann-equipment.com/en/distributor)

AUSTRIA  
+43 2641 24524

FRANCE  
+33 134 48 58 78

GERMANY  
+49 8634 622 0

ITALY  
+39 0522 733 411



Snap-on® Total Shop Solutions offers a wide range of garage equipment solutions for workshops, garages, car dealers and tyre shops, thanks to the specific solutions provided by its portfolio of premium brands. Hofmann® is a brand of TSS and is committed to product innovation and improvement. Therefore, specifications listed in this sell sheet may change without notice. ©2023 Snap-on Incorporated. Hofmann® is a trademark, registered in the United States and other countries, of Snap-on Incorporated. All rights reserved. All other marks are marks of their respective holders. sswa23041 12/2023



[HOFMANN-EQUIPMENT.COM](http://HOFMANN-EQUIPMENT.COM)

**HOFMANN®**