

**HOFMANN**® 

# geodyna® 7850-2P



**HOFMANN**®   
geodyna 7850-2p

 EV READY

**PREMIUM SERVICE BALANCER**

**ENGINEERING UNLEASHED™**



## WHEEL BALANCER WITH NON-CONTACT DATA ENTRY AND DIAGNOSTIC FUNCTIONS

Incorporating the most sophisticated diagnostic solutions obtainable, the fully-automatic geodyna® 7850-2P wheel balancing system is purposefully engineered to cater to tyre establishments handling substantial volumes. Showcasing a 19-inch touchscreen monitor strategically positioned above the wheel guard, it enhances ergonomic functionality by expertly guiding technicians through the comprehensive balancing process. Complementing this, an integrated wheel lift effectively diminishes the likelihood of technician fatigue. Automatic non-contact data entry, promptly detects the spoke count and selects the appropriate balancing mode, rendering manual data entry unnecessary. Leveraging state-of-the-art easyWeight™ technology, this balancer precisely determines the optimal weight placement location with laser-guided precision. Furthermore, our revolutionary Split Weight Mode empowers users to balance high-performance wheels while discreetly concealing the weights behind the spokes, preserving the wheel's visual appeal. To ensure unmatched usability, performance, and precision, the geodyna® 7850-2P emerges as the wheel balancer of choice.

# THE ULTIMATE IN PRODUCTIVITY AND PERFORMANCE



### AUTOMATIC DATA ENTRY

Eliminating the need for manual input, this intelligent machine automatically detects wheel dimensions and selects the appropriate balancing mode, weight type, and weight position. This automation accelerates the balancing cycle, reduces operational errors, and enhances efficiency.



### EASYWEIGHT™

Streamlining weight placement, this precision-focused system eliminates guesswork. It employs a laser to precisely indicate the exact location for weight application, ensuring meticulous balancing and accurate results.



### POWER CLAMP™

Utilising advanced electromechanical technology, this balancer incorporates a power clamping device that consistently and reliably secures the wheel with a constant force. This ensures exceptional accuracy and repeatable results every time.



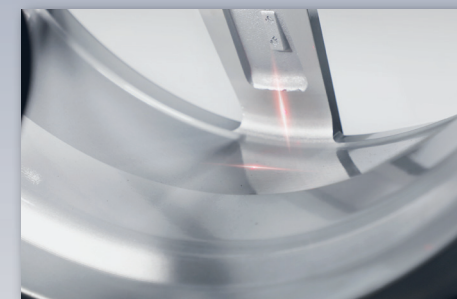
### SMARTSONAR™

This intelligent system utilises sonar sensors to automatically detect the rim width, eliminating the need for manual input and reducing the possibility of errors. By streamlining the process, it enhances efficiency and accuracy.



### TOUCHSCREEN INTERFACE

Boasting a rapid and intuitive interface, this system incorporates a large touchscreen display with easy-to-read digits. Additionally, colored weight position indicators enhance speed, ease-of-use, and overall ergonomics, facilitating daily operations.



### AUTOMATIC SPOKE DETECTION

A laser scanner automatically detects the number and position of rim spokes, guiding optimal weight placement behind them for precise balancing with split weights.



**SEMI-AUTOMATIC DATA ENTRY**

Equipped with a user-friendly gauge arm, this system facilitates data entry with easyALU™ assisted rim measurement technology. Technicians simply touch the rim with the gauge arm, and the system automatically enters the rim dimensions and selects the appropriate weight-balancing mode.

**REPORT**

Easily generate reports on the local network (additional hardware required) or save as PDFs on a flash drive, facilitating convenient sharing of detailed information with customers for documentation or reference.

**SPLIT WEIGHT MODE**

This feature ensures accurate balancing and discreet weight concealment behind spokes, maintaining the wheel's aesthetic appeal and visual presentation.



**7800-2P**  
Version without wheel lift



**STOP IN POSITION**

By simply touching the screen, users can prompt the system to automatically rotate the wheel to the precise position for weight application. This convenient feature streamlines the process and enhances operational efficiency.



**OPTIMISED FOR EV WHEELS**

Optimise balancing wheels, including EV, with the latest technology and precise engineering.



**RIM LIGHTING**

Equipped with a powerful LED lighting system, this balancer ensures optimal illumination of the rim. This feature aids in rim cleaning and significantly assists in the precise positioning of weights, ensuring a seamless balancing process.

**TECHNICAL SPECIFICATIONS**

Automatic Rim Diameter Range	14" - 26"   35,5 - 66cm
Automatic Rim Width Range	3" - 15,8"   7,6 - 40cm
Manual Rim Diameter Range	8" - 32"   20,3 - 81,2cm
Manual Rim Width Range	1" - 20"   2,54 - 50,8cm
Max Wheel Diameter	42"   106,6cm
Max Wheel Weight	154 lbs.   70kg
Power Supply	230V 1ph 50-60Hz
Dimensions HxWxL	61"x 40"x 76"   157x102x194cm

**STANDARD ACCESSORIES**

- Conical flange and electro-mechanical Power Clamp™ device
- Drum, drum cushion, 3 cones (1,7-3,2" | 42-80mm), (2,8-3,9" | 72-99mm), (3,8-4,6" | 96-116mm) dia.
- Universal weight pliers, adhesive weight removing tool
- 4 Storage pegs on left-hand side of machine

**VERSION DIFFERENCES**

- 7850-2P - All features
- 7850-2P - does not include wheel lift

**FIND A DISTRIBUTOR**

hofmann-equipment.com/en/distributor

**AUSTRIA**  
+43 2641 24524

**FRANCE**  
+33 134 48 58 78

**GERMANY**  
+49 8634 622 0

**ITALY**  
+39 0522 733 411



Small text: Snap-on® Total Shop Solutions offers a wide range of garage equipment solutions for workshops, garages, car dealers and tyre shops, thanks to the specific solutions provided by its portfolio of premium brands. Hofmann® is a brand of TSS and is committed to product innovation and improvement. Therefore, specifications listed in this sell sheet may change without notice. ©2023 Snap-on Incorporated. Hofmann® is a trademark, registered in the United States and other countries, of Snap-on Incorporated. All rights reserved. All other marks are marks of their respective holders. sswb23013 12/2023

